

Roller Shades From Rollergy®

HanDeGroup

WINDOW COVERINGS





Product: Roller Shades FR



Roller shades provide an excellent solution for controlling light and glare. Simple, versatile, distinctive, and cost-effective, our line includes a wide range of decorative and performance fabric, mounted on high-quality hardware.

MANUAL ROLLER SHADES 1

MOTORIZED ROLLER SHADES 2

DIMENSIONS CHARTS 3

FABRIC SELECTOR 4

Manual Roller Shades

MANUAL ROLLER SHADES



— **MANUAL ROLLER SHADES MOUNT** —

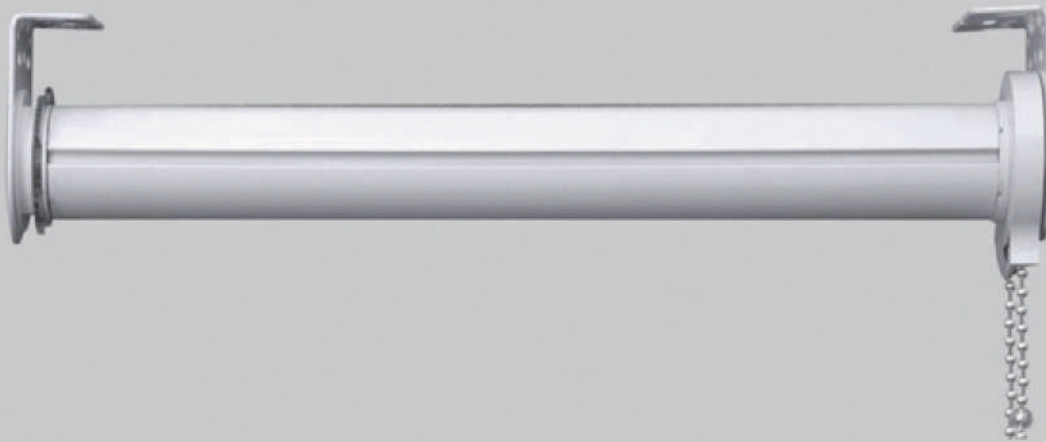


Outside & Inside Mount



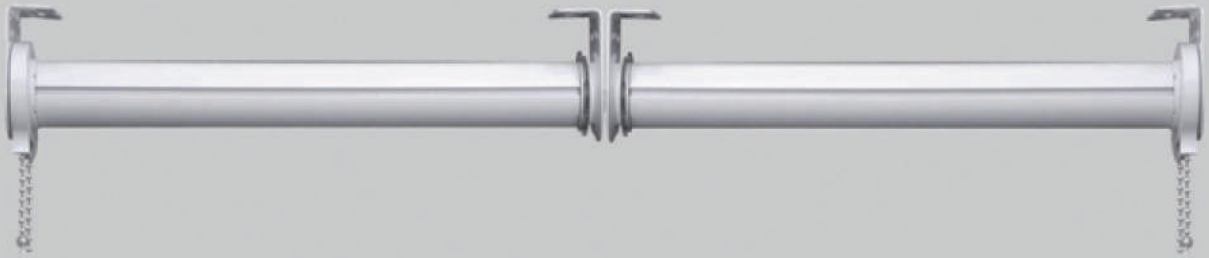
Ceiling Mount

— **SINGLE SHADES MOUNT** —



— SIDE-BY-SIDE MOUNTING —

LEFT AND RIGHT CLUTCHES



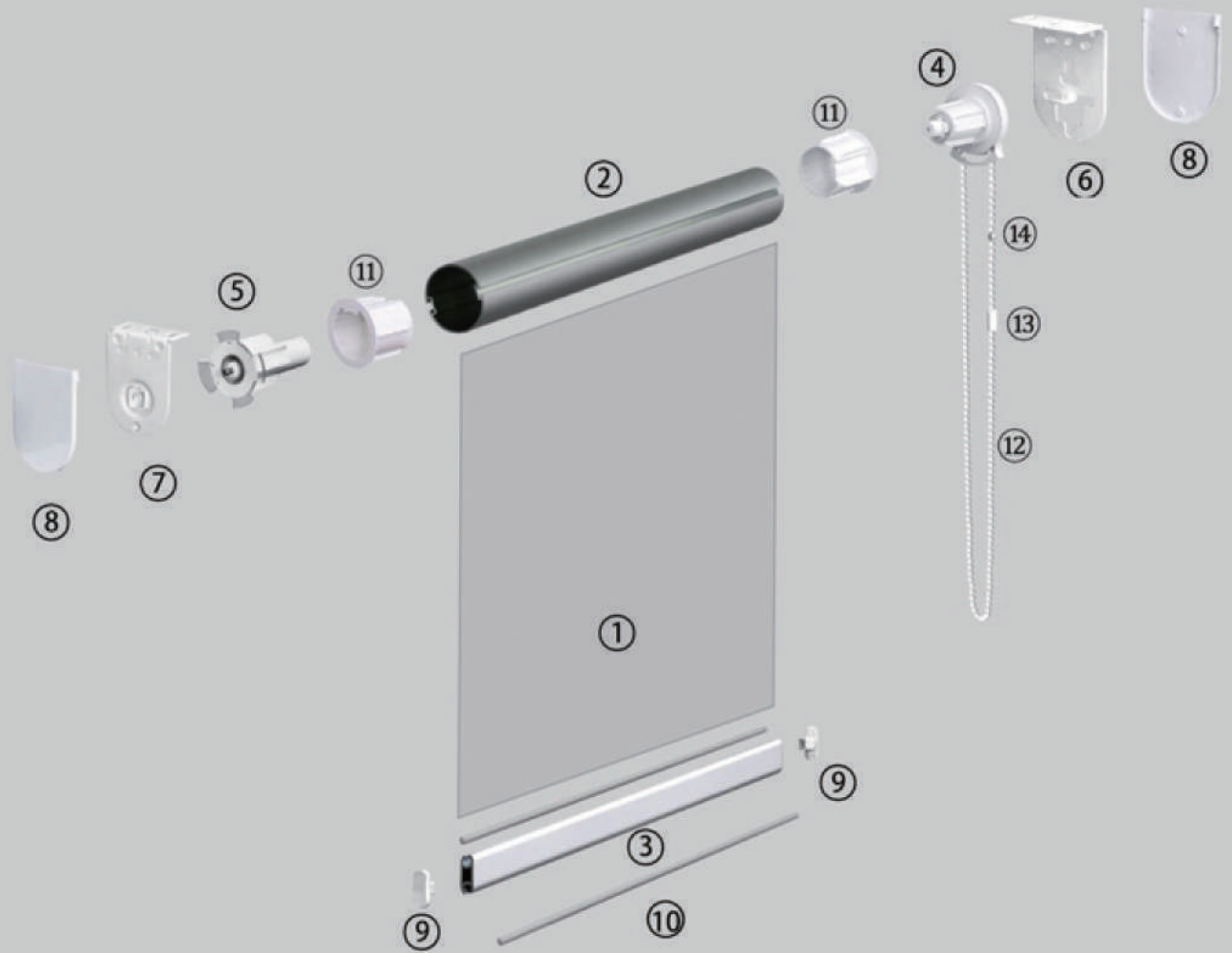
LEFT CLUTCHES



INSIDE CLUTCHES



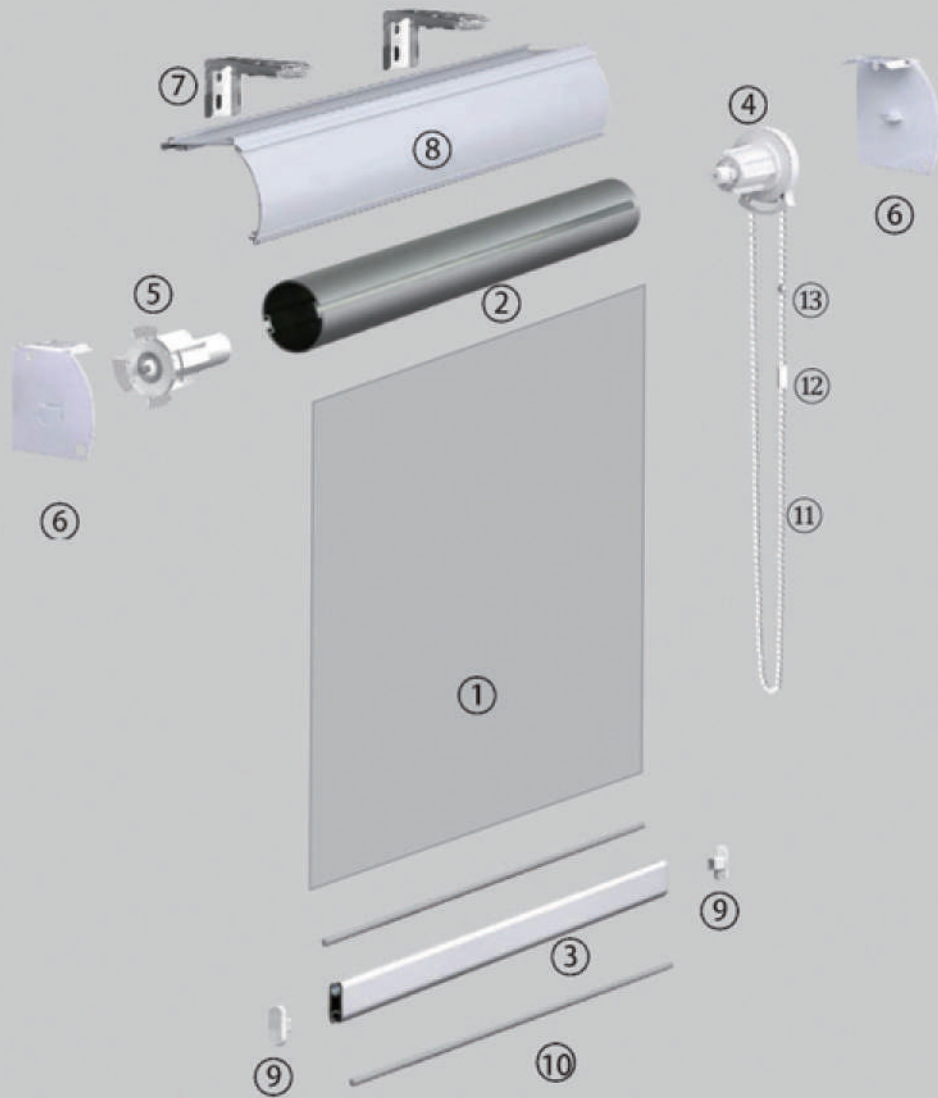
— MANUAL ROLLER SHADES —



标准配件 STANDARD COMPONENTS

- | | |
|--|--------------------------------------|
| ① Fabric | ⑪ Adapter for DG50 Clutch & End Plug |
| ② Roller Tube Dimensions :
DG38----38mm DG50----50mm | ⑫ Bead Chain |
| ③ Hem Bar | ⑬ Bead Chain Connector |
| ④ Clutch | ⑭ Bead Chain Stop |
| ⑤ End Plug | |
| ⑥ Clutch Bracket | |
| ⑦ End Plug Bracket | |
| ⑧ Bracket End Cap | |
| ⑨ Hem Bar end cap | |
| ⑩ Trim Strip | |

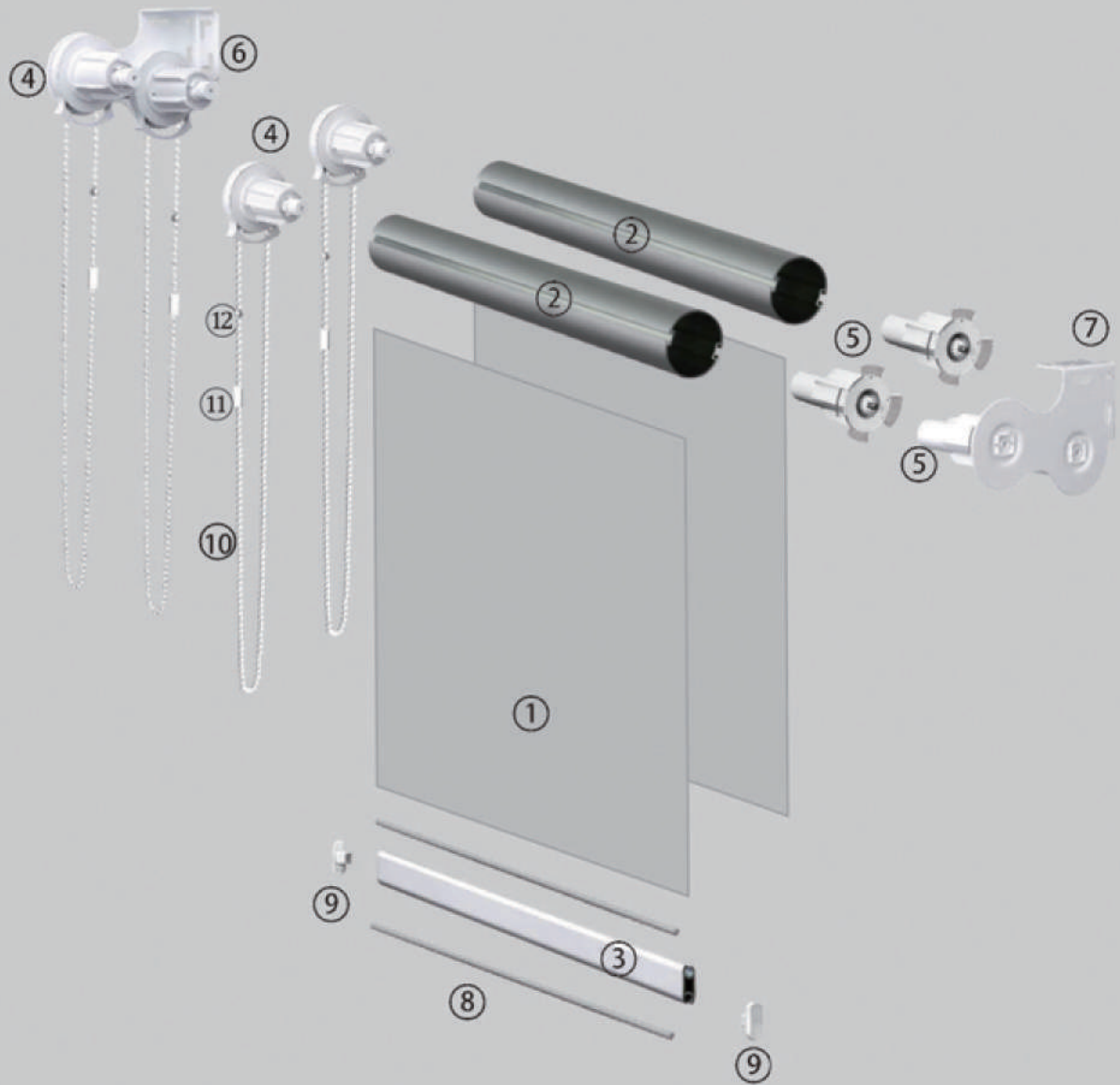
— FRONT FASCIA MANUAL ROLLER SHADES —



STANDARD COMPONENTS

- | | |
|--|------------------------|
| ① Fabric | ⑪ Bead Chain |
| ② Roller Tube Dimensions :
DG38----38mm | ⑫ Bead Chain Connector |
| ③ Hem Bar | ⑬ Bead Chain Stop |
| ④ Clutch | |
| ⑤ End Plug | |
| ⑥ Front Fascia End Cap | |
| ⑦ Front Fascia Bracket | |
| ⑧ Front Fascia | |
| ⑨ Hem Bar end cap | |
| ⑩ Trim Strip | |

— DUAL MANUAL ROLLER SHADES —



STANDARD COMPONENTS

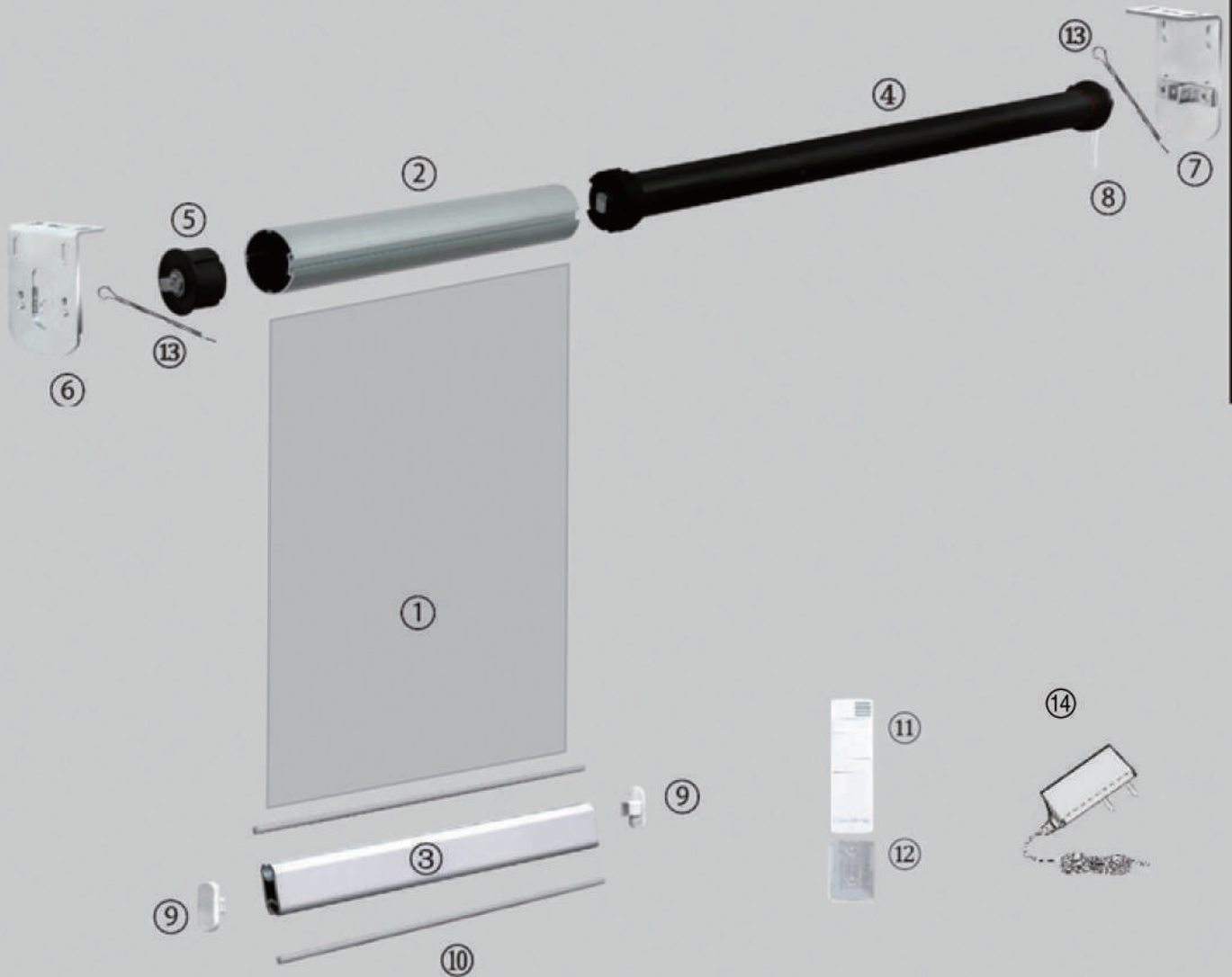
- | | |
|--|------------------------|
| ① Fabric | ⑪ Bead Chain Connector |
| ② Roller Tube Dimensions :
DG38----38mm | ⑫ Bead Chain Stop |
| ③ Hem Bar | |
| ④ Clutch | |
| ⑤ End Plug | |
| ⑥ Dual Clutch Bracket | |
| ⑦ Dual End Plug Bracket | |
| ⑧ Trim Strip | |
| ⑨ Hem Bar end cap | |
| ⑩ Bead Chain | |

Motorized Roller Shades

MOTORIZED ROLLER SHADES



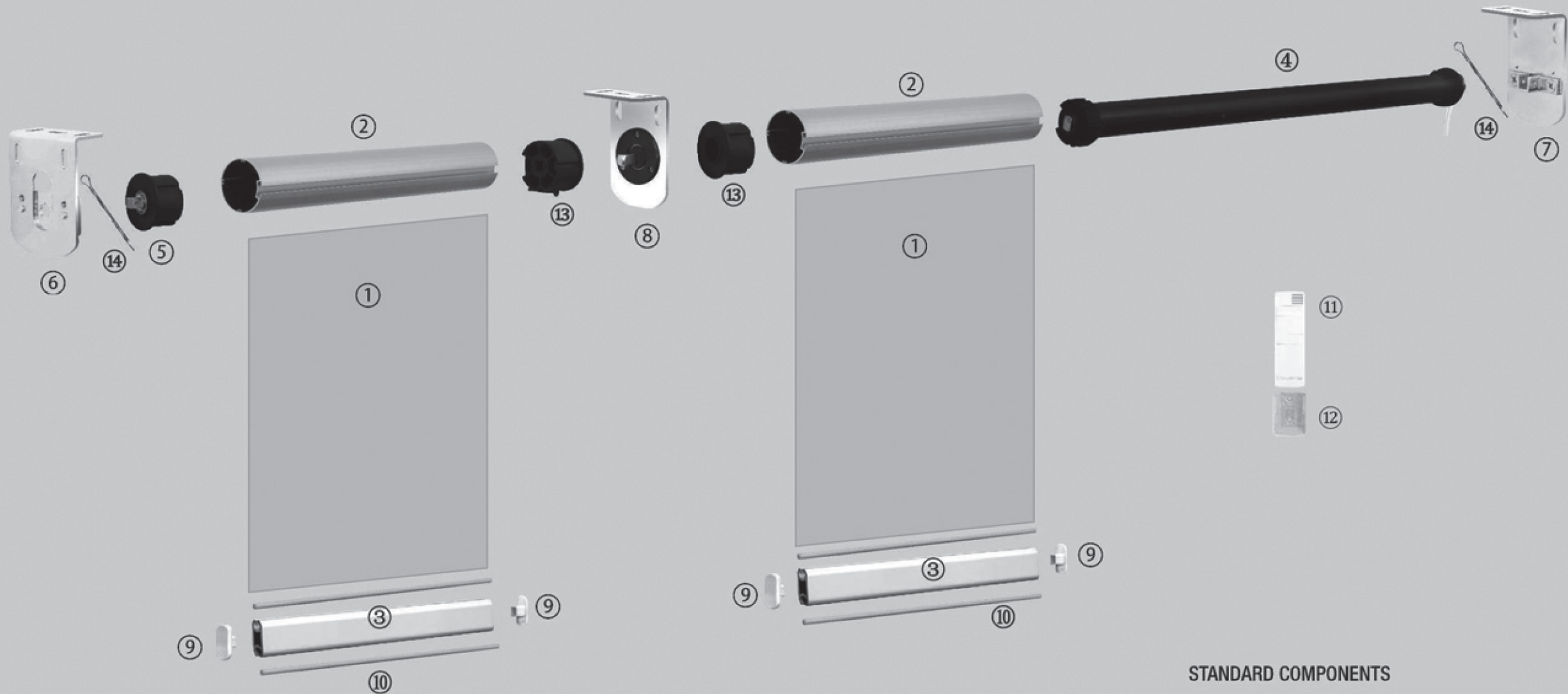
— 38mm/50mm Tube Motorized Roller Shades —



STANDARD COMPONENTS

- | | | | |
|---|---|---|---|
| ① | Fabric | ⑪ | Remote Transmitters |
| ② | Roller Tube Dimensions :
DG50----50mm DG38----38mm | ⑫ | Remote Transmitters base |
| ③ | Hem Bar | ⑬ | Cotter Pin |
| ④ | 35mm Li-ion Battery Motor
35mm AC Motor | ⑭ | Charger (Only for Li-ion Battery Motor) |
| ⑤ | End Plug | | |
| ⑥ | End Plug Bracket | | |
| ⑦ | Motor Mount Bracket | | |
| ⑧ | Power Cord | | |
| ⑨ | Hem Bar end cap | | |
| ⑩ | Trim Strip | | |

— MOTORIZED ROLLER SHADES —



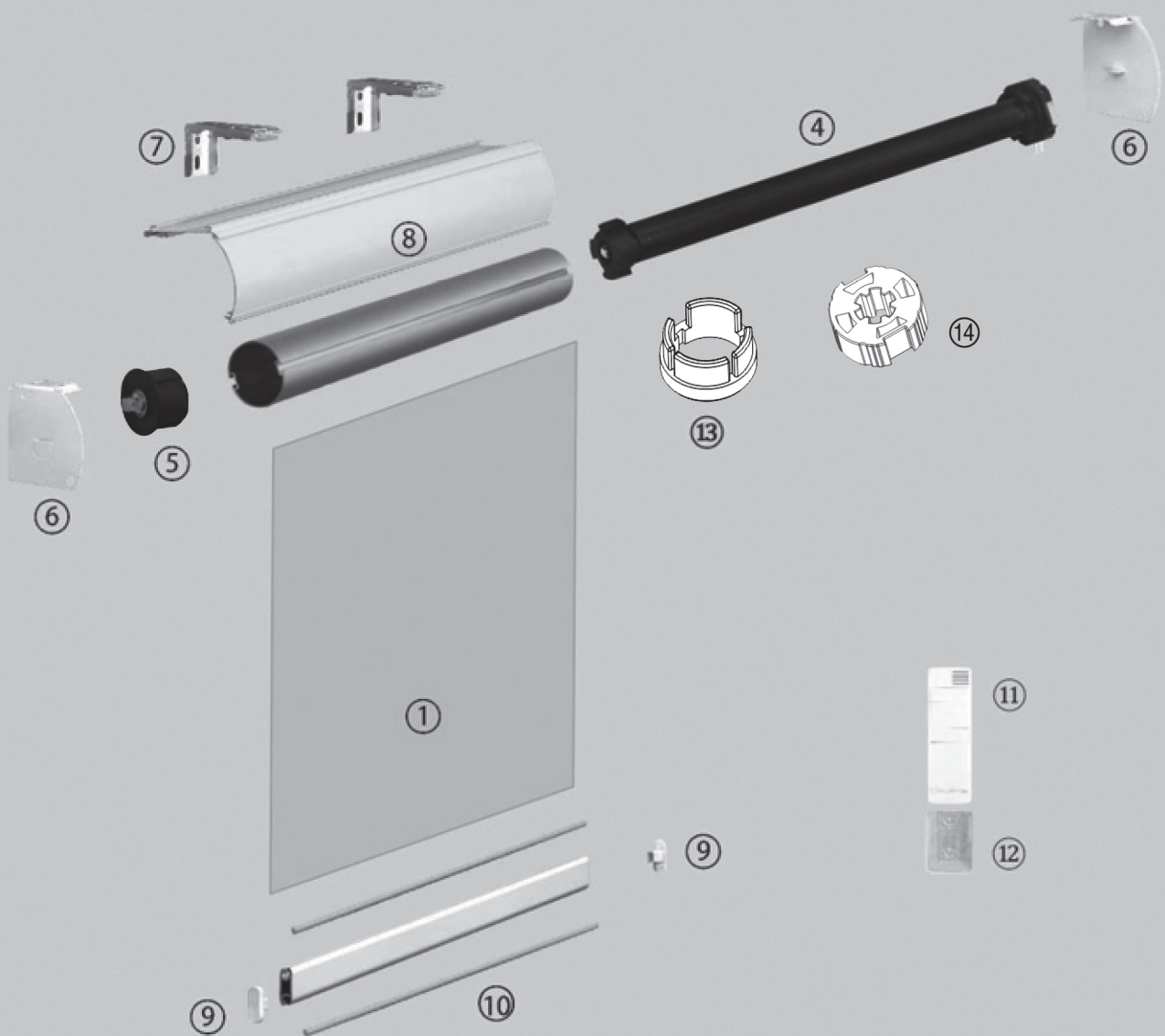
- ① Fabric
- ② Roller Tube Dimensions :
DG50----50mm
- ③ Hem Bar
- ④ 35mm Motor

- ⑤ End Plug
- ⑥ End Plug Bracket
- ⑦ Motor Mound Bracket
- ⑧ Middle Mound Bracket
- ⑨ Hem Bar end cap

STANDARD COMPONENTS

- ⑩ Trim Strip
- ⑪ Remote Transmitters
- ⑫ Remote Transmitters base
- ⑬ Middle Plug
- ⑭ Cotter Pin

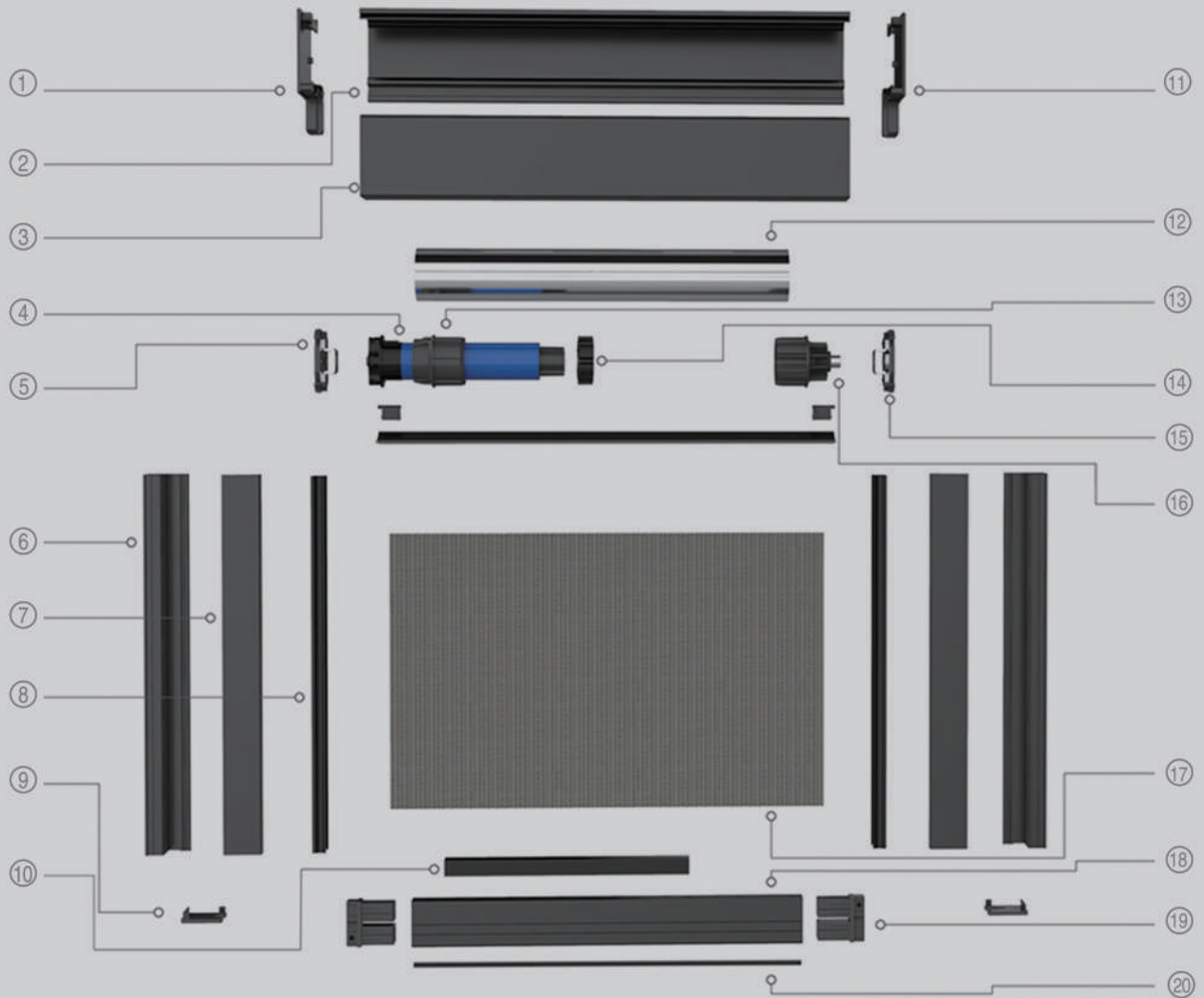
— FRONT FASCIA MOTORIZED ROLLER SHADES —



STANDARD COMPONENTS

- | | |
|---|--------------------------------|
| ① Fabric | ⑪ Remote Transmitters |
| ② Roller Tube Dimensions :
DG38---38mm | ⑫ Remote Transmitters base |
| ③ Hem Bar | ⑬ Crown (Fixed on the motor) |
| ④ 25mm Motor | ⑭ Adaptor (Fixed on the motor) |
| ⑤ End Plug | |
| ⑥ Front Fascia End Cap | |
| ⑦ Front Fascia Bracket | |
| ⑧ Front Fascia | |
| ⑨ Hem Bar end cap | |
| ⑩ Trim Strip | |

— MORTORIZED ZIPPER TRACK BLINDS WITH CASSETTE —



STANDARD COMPONENTS

- | | |
|--------------------------|--------------------|
| ① Left End Cap | ⑪ Right End Cap |
| ② Cassette | ⑫ Aluminum Tube |
| ③ Cassette Side Cap | ⑬ Crown |
| ④ Motor | ⑭ Adaptor |
| ⑤ Motor Side Bracket | ⑮ End Plug Bracket |
| ⑥ Side Track | ⑯ End Plug |
| ⑦ Side Track Cover | ⑰ Fabric |
| ⑧ Guide Track | ⑱ Underbeam |
| ⑨ Side Track Bottom Seal | ⑲ Underbeam Seal |
| ⑩ Balancing Weight | ⑳ Dust Seal |

— MOTORIZED ROLLER SHADES MOUNT —

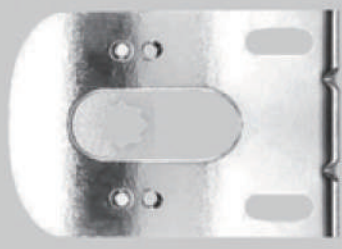


Outside & Inside Mount

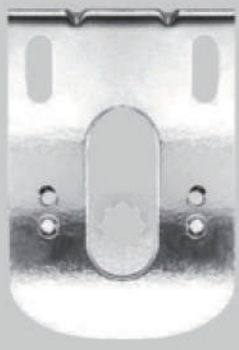


Ceiling Mount

— MOTORIZED ROLLER SHADES MOUNT —



Outside & Inside Mount



Ceiling Mount

DIMENSIONS CHARTS

38mm Tube Alum. Tube (without Cassette)

-0.8mm THK Aluminum Tube

MIN WIDTH/HEIGHT	MAX WIDTH	MAX HEIGHT	MAX AREA	WINDOW FRAME DEPTH
300/500mm	1500mm	4000mm	5m ²	≥ 100mm

38mm Tube Alum. Tube (without Cassette)

-1.2mm THK Aluminum Tube

MIN WIDTH/HEIGHT	MAX WIDTH	MAX HEIGHT	MAX AREA	WINDOW FRAME DEPTH
300/500mm	2000mm	4000mm	6.5m ²	≥ 100mm

38mm Tube Alum. Tube (without Cassette)

-Dual Layer Roller Blinds

MIN WIDTH/HEIGHT	MAX WIDTH	MAX HEIGHT	MAX AREA	WINDOW FRAME DEPTH
300/500mm	2000mm	2000mm	4m ²	≥ 160mm

38mm Tube Alum. Tube (with Cassette)

-1.2mm THK Aluminum Tube

MIN WIDTH/HEIGHT	MAX WIDTH	MAX HEIGHT	MAX AREA	WINDOW FRAME DEPTH
300/500mm	2000mm	2500mm	5m ²	≥ 100mm

50mm Tube Alum. Tube (without Cassette)

-1.4mm THK Aluminum Tube

MIN WIDTH/HEIGHT	MAX WIDTH	MAX HEIGHT	MAX AREA	WINDOW FRAME DEPTH
300/500mm	2500mm	4000mm	7m ²	≥ 100mm

DIMENSIONS CHARTS

58mm Tube Alum. Tube (without Cassette)

-1.4mm THK Aluminum Tube

MIN WIDTH/HEIGHT	MAX WIDTH	MAX HEIGHT	MAX AREA	WINDOW FRAME DEPTH
300/500mm	3500mm	4000mm	8m ²	≥ 100mm

Spring System 38mm Tube Alum. Tube (without Cassette)

-1.2mm THK Aluminum Tube

MIN WIDTH/HEIGHT	MAX WIDTH	MAX HEIGHT	MAX AREA	WINDOW FRAME DEPTH
680/500mm	2400mm	2500mm	3.5m ²	≥ 80mm

38mm Tube Alum. Tube (with Cassette)

- 1.2mm THK , 25mm Diameter Motor

MIN WIDTH/HEIGHT	MAX WIDTH	MAX HEIGHT	MAX AREA	WINDOW FRAME DEPTH
520/500mm	2000mm	2500mm	5m ²	≥ 100mm

38mm Tube Alum. Tube (without Cassette)

- 1.2mm THK , 25mm Diameter Motor

MIN WIDTH/HEIGHT	MAX WIDTH	MAX HEIGHT	MAX AREA	WINDOW FRAME DEPTH
520/500mm	2000mm	4000mm	6m ²	≥ 100mm

50mm Tube Alum. Tube (without Cassette)

-1.4mm THK Aluminum Tube , 35mm Diameter AC Motor

MIN WIDTH/HEIGHT	MAX WIDTH	MAX HEIGHT	MAX AREA	WINDOW FRAME DEPTH
800/500mm	2500mm	4000mm	8m ²	≥ 120mm

DIMENSIONS CHARTS

DIMENSIONS CHARTS

50mm Tube Alum. Tube (without Cassette)

-1.4mm THK Aluminum Tube , 35mm Diameter Battery Motor

MIN WIDTH/HEIGHT	MAX WIDTH	MAX HEIGHT	MAX AREA	WINDOW FRAME DEPTH
950/500mm	2500mm	4000mm	7m ²	≥ 120mm

50mm Tube Alum. Tube (without Cassette)

-Dual Layer Roller Blinds

MIN WIDTH/HEIGHT	MAX WIDTH	MAX HEIGHT	MAX AREA	WINDOW FRAME DEPTH
800/500mm	2500mm	4000mm	8m ²	≥ 200mm

65mm Tube Alum. Tube (without Cassette)

-1.4mm THK Aluminum Tube , 45mm Diameter AC Motor

MIN WIDTH/HEIGHT	MAX WIDTH	MAX HEIGHT	MAX AREA	WINDOW FRAME DEPTH
800/500mm	3000mm	4000mm	10m ²	≥ 120mm

63mm Tube Alum. Tube (without Cassette)

-1.5mm THK Aluminum Tube,35mm Diameter Motor

MIN WIDTH/HEIGHT	MAX WIDTH	MAX HEIGHT	MAX AREA	WINDOW FRAME DEPTH
1000/1000mm	3000mm	3000mm	9m ²	NA

78mm Tube Alum. Tube (without Cassette)

45mm Diameter Motor

MIN WIDTH/HEIGHT	MAX WIDTH	MAX HEIGHT	MAX AREA	WINDOW FRAME DEPTH
1000/1000mm	5000mm	3000mm	15m ²	NA

DIMENSIONS CHARTS

**63mm Tube Alum. Tube (without Cassette)
-1.5mm THK Aluminum Tube,35mm Diameter Motor**

MIN WIDTH/HEIGHT	MAX WIDTH	MAX HEIGHT	MAX AREA	WINDOW FRAME DEPTH
1000/1000mm	3000mm	4000mm	12m ²	≥200mm

**63mm Tube Alum. Tube (with Cassette) (Dual Layer)
-1.2mm THK Aluminum Tube,35mm Diameter Motor**

MIN WIDTH/HEIGHT	MAX WIDTH	MAX HEIGHT	MAX AREA	WINDOW FRAME DEPTH
1000/1000mm	3000mm	3500mm	10.5m ²	≥250mm

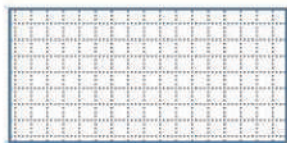
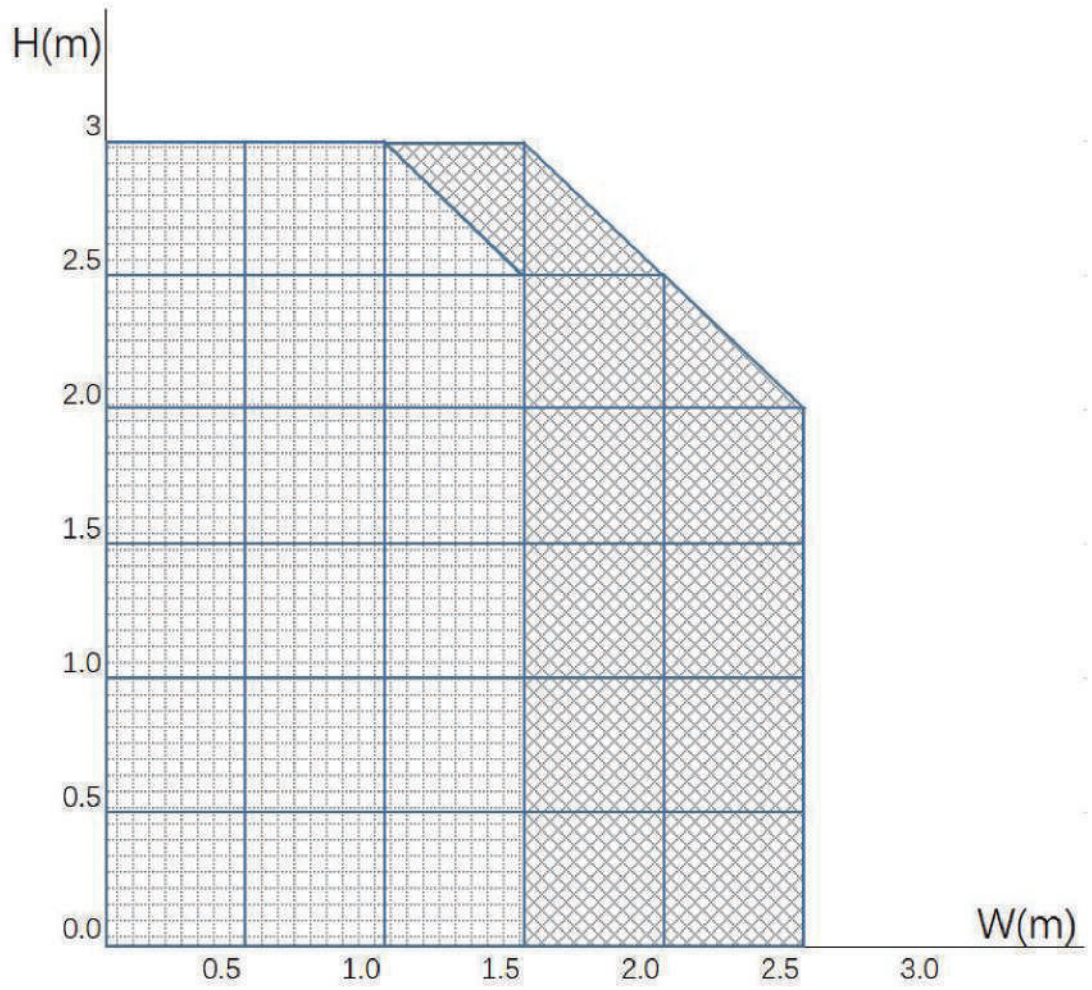
**78mm Tube Alum. Tube (without Cassette) (One Layer)
45mm Diameter Motor**

MIN WIDTH/HEIGHT	MAX WIDTH	MAX HEIGHT	MAX AREA	WINDOW FRAME DEPTH
1000/1000mm	5000mm	4000mm	20m ²	≥200mm

**78mm Tube Alum. Tube (without Cassette) (Dual Layer)
45mm Diameter Motor**

MIN WIDTH/HEIGHT	MAX WIDTH	MAX HEIGHT	MAX AREA	WINDOW FRAME DEPTH
1000/1000mm	5000mm	3500mm	17.5m ²	≥250mm

38 ROLLER TUBE SELECTED REFERENCE



Roller Tube Thickness
1.0mm



Roller Tube Thickness
1.2mm

Fabric Selector

FABRIC SELECTOR



FABRIC COLLECTION INDEX

FABRIC NAME	MAX.WIDTH	CONTENT		OPENNESS FACTOR
Nova Basket 1% - NB01	300cm	25% Polyester	75% PVC	1%
Nova Basket 3% - NB03	300cm	25% Polyester	75% PVC	3%
Nova Basket 5% - NB05	300cm	25% Polyester	75% PVC	5%
Nova Basket 10% - NB10	300cm	25% Polyester	75% PVC	10%
Basket 1% - B01	300cm	22% Polyester	78% PVC	1%
Basket 3% - B03	300cm	22% Polyester	78% PVC	3%
Basket 5% - B05	300cm	22% Polyester	78% PVC	5%
Basket 10%- B10	300cm	22% Polyester	78% PVC	10%
Horizon Basket 1% - HB01	300cm	22% Polyester	78% PVC	1%
Horizon Basket 3% - HB03	300cm	22% Polyester	78% PVC	3%
Horizon Basket 5% - HB05	300cm	22% Polyester	78% PVC	5%
Horizon Basket 10% - HB10	300cm	22% Polyester	78% PVC	10%
Flat Basket 3% - FB03	300cm	25% Polyester	75% PVC	3%
Flat Basket 5% - FB05	300cm	25% Polyester	75% PVC	5%
Flat Basket 10% - FB10	300cm	25% Polyester	75% PVC	10%
Mario 1% - MA01	300cm	24% Polyester	76% PVC	1%
Mario 3% - MA03	300cm	24% Polyester	76% PVC	3%
Mario 5% - MA05	300cm	24% Polyester	76% PVC	5%
Mario 10% - MA10	300cm	24% Polyester	76% PVC	10%
Clear Vision	410cm	22% Polyester	78% PVC	1% / 3% / 5% / 10%
Clear Vision - E	410cm	31% Polyester	69% PVC	5%
Blockout - Deco	300cm	100% Polyester coated with Acrylic		0%
NightFall	300cm	24% Polyester	76% PVC	0%
Solar Blockout	300cm	25% Polyester	75% PVC	0%
Nova Twill 1% - NT01	300cm	25% Polyester	75% PVC	1%
Nova Twill 3% - NT03	300cm	25% Polyester	75% PVC	3%
TwillGT03	300cm	20% Fibreglass	80% PVC	3%
Kiev	300cm	25% Polyester	75% PVC	3%
Kiev GK03	300cm	20% Fibreglass	80% PVC	3%
Fortune - Basket	300cm	25% Polyester	75% PVC	3%
Fortune - Twill	300cm	25% Polyester	75% PVC	3%
PrivScreen	300cm	24% Polyester	76% PVC	0%
SheerScreen	300cm	25% Polyester	75% PVC	12%
Ultra-Fine Screen- Basket	300cm	30% Polyester	70% PVC	3%
Ultra-White Screen - Basket	300cm	25% Polyester	75% PVC	5%
External Basket 3% - EB03	300cm	26% Polyester	74% PVC	3%
External Basket 5% - EB05	300cm	26% Polyester	74% PVC	5%

— FABRIC COLLECTION INDEX —

FABRIC NAME	MAX. WIDTH	CONTENT		OPENNESS FACTOR
Novel - Convex	300cm	25% Polyester	75% PVC	5%
Novel - Morie	300cm	25% Polyester	75% PVC	3%
Novel - Kira	300cm	25% Polyester	75% PVC	3%
Novel - Sea Shore	300cm	25% Polyester	75% PVC	3%
Novel - Sateen Twill	300cm	25% Polyester	75% PVC	3%
Special - Mocha	290cm	25% Polyester	75% PVC	12%
Special - Champlain	290cm	25% Polyester	75% PVC	25%
Special - Candela	250cm	25% Polyester	75% PVC	5%
Special - Maze	300cm	25% Polyester	75% PVC	9%
Special - Viewscreen	300cm	25% Polyester	75% PVC	12%
Special - Lausanne	250cm	25% Polyester	75% PVC	5%
Blockout - Scala	300cm	100% Polyester With Foam Coating		0%
Serge	300cm	26% Polyester	74% PVC	3%
Serge GS03	300cm	35% Fibreglass	75% PVC	3%
Zebra	300cm	25% Polyester	75% PVC	0% / 65%
NatureScreen	300cm	35% Polyester	65% PVC	5%
PrintingScreen	300cm	25% Polyester	75% PVC	5%

* For Additional fabric specification and fenestration information, see individual fabric selector pages.

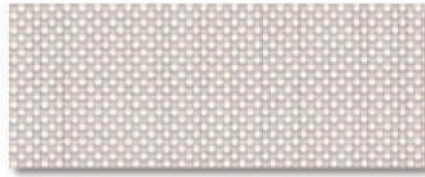
Note: The digital colors throughout this catalogue may vary from the actual material.
The picture of openness Factor may be slightly different from the actual one

Mario

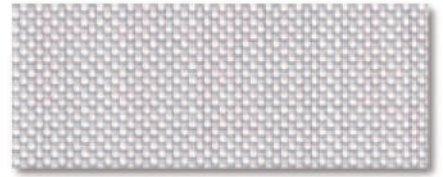
1%-3%-5%-10% Openness



WHITE / WHITE



WHITE / LINEN



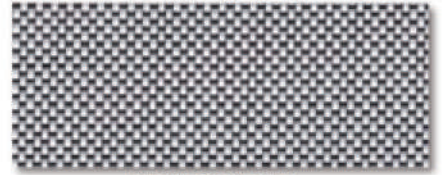
WHITE / PEARL



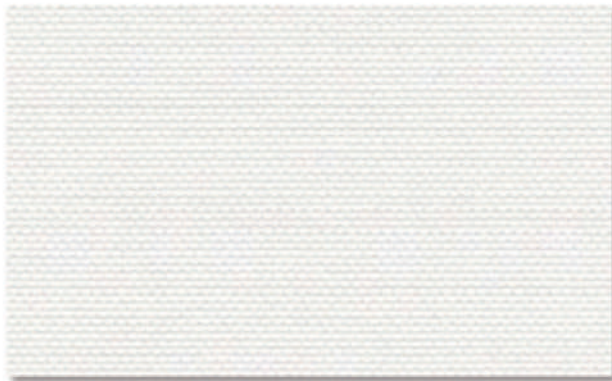
WHITE / GREY



WHITE / SAND



WHITE / BLACK



1% OPENNESS



3% OPENNESS



5% OPENNESS



10% OPENNESS

Specifications

OPENNESS: **Aprox 1%**
 COMPOSITION: 24%Polyester, 76% PVC
 MAX FABRIC WIDTH: 300cm
 ROLL LENGTH: 30m
 FABRIC WEIGHT: 540g ± 5%
 FABRIC THICKNESS: 0.69mm ± 5%

FIRE CLASSIFICATION NFPA 701, B1-DIN4102, B2-GB17591
 HEALTH & SAFETY Oeko-tex 100, Greenguard® Gold
 RoHS Directive (EU)2015/863, EN71 Part 3
 COLOUR FASTNESS TO LIGHT Grade 6 ISO105 B02, ≥4.0 AATCC 16

OPENNESS: **Aprox 3%**
 COMPOSITION: 24%Polyester, 76% PVC
 MAX FABRIC WIDTH: 300cm
 ROLL LENGTH: 30m
 FABRIC WEIGHT: 485g ± 5%
 FABRIC THICKNESS: 0.56mm ± 5%

FIRE CLASSIFICATION NFPA 701, B1-DIN4102, B2-GB17591
 HEALTH & SAFETY Oeko-tex 100, Greenguard® Gold
 RoHS Directive (EU)2015/863, EN71 Part 3
 COLOUR FASTNESS TO LIGHT Grade 6 ISO105 B02, ≥4.0 AATCC 16

OPENNESS: **Aprox 5%**
 COMPOSITION: 24%Polyester, 76% PVC
 MAX FABRIC WIDTH: 300cm
 ROLL LENGTH: 30m
 FABRIC WEIGHT: 460g ± 5%
 FABRIC THICKNESS: 0.56mm ± 5%

FIRE CLASSIFICATION NFPA 701, B1-DIN4102, B2-GB17591
 HEALTH & SAFETY Oeko-tex 100, Greenguard® Gold
 RoHS Directive (EU)2015/863, EN71 Part 3
 COLOUR FASTNESS TO LIGHT Grade 6 ISO105 B02, ≥4.0 AATCC 16

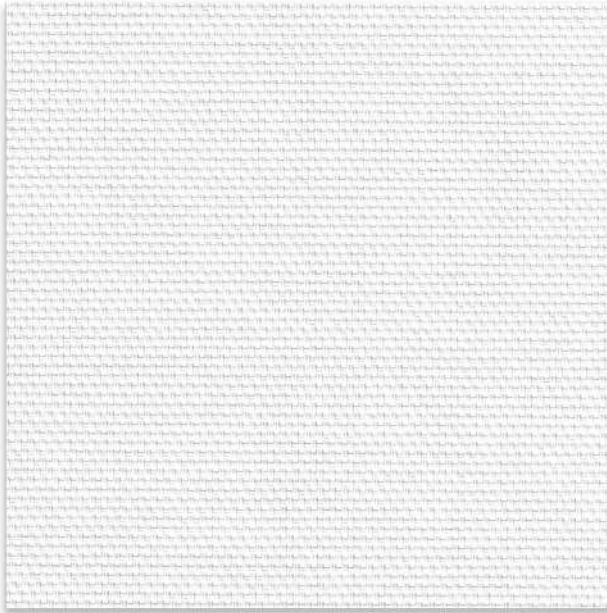
OPENNESS: **Aprox 10%**
 COMPOSITION: 24%Polyester, 76% PVC
 MAX FABRIC WIDTH: 300cm
 ROLL LENGTH: 30m
 FABRIC WEIGHT: 413g ± 5%
 FABRIC THICKNESS: 0.56mm ± 5%

FIRE CLASSIFICATION NFPA 701, B1-DIN4102, B2-GB17591
 HEALTH & SAFETY Oeko-tex 100, Greenguard® Gold
 RoHS Directive (EU)2015/863, EN71 Part 3
 COLOUR FASTNESS TO LIGHT Grade 6 ISO105 B02, ≥4.0 AATCC 16

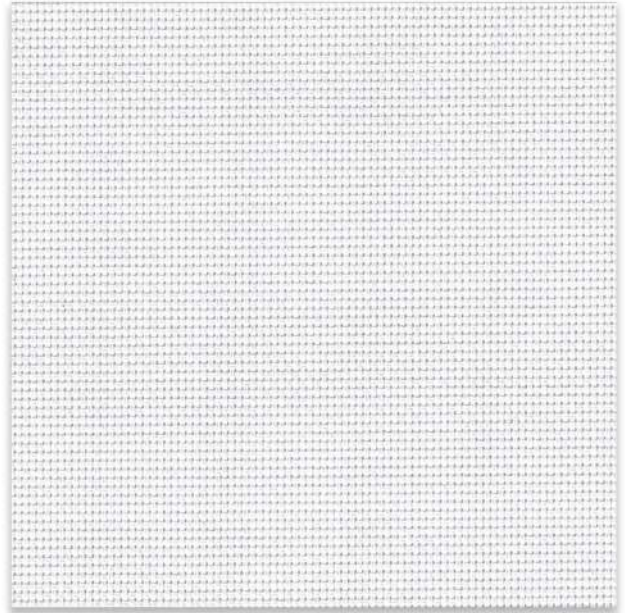
Clear Vision

FABRIC SELECTOR

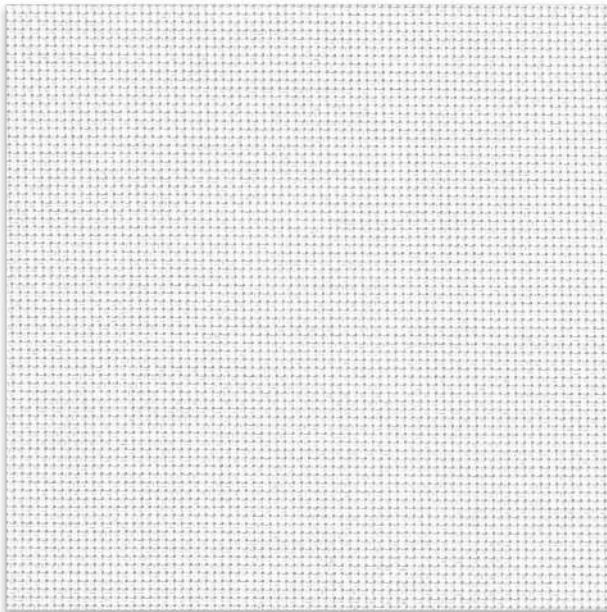
0101 White * White



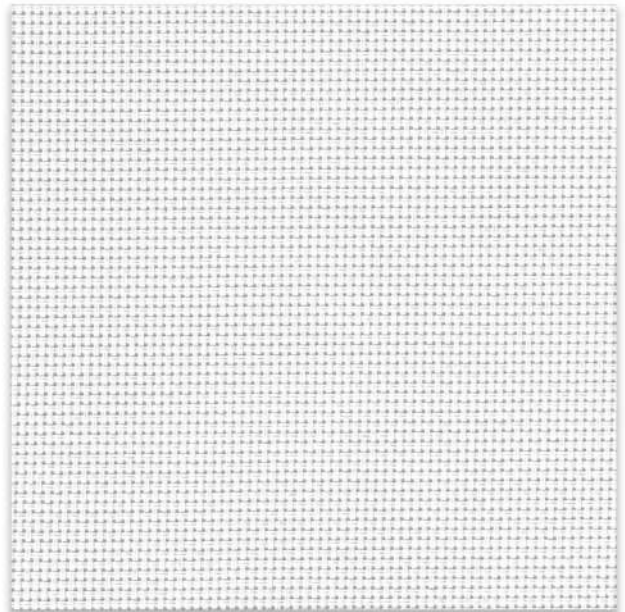
CV 1%



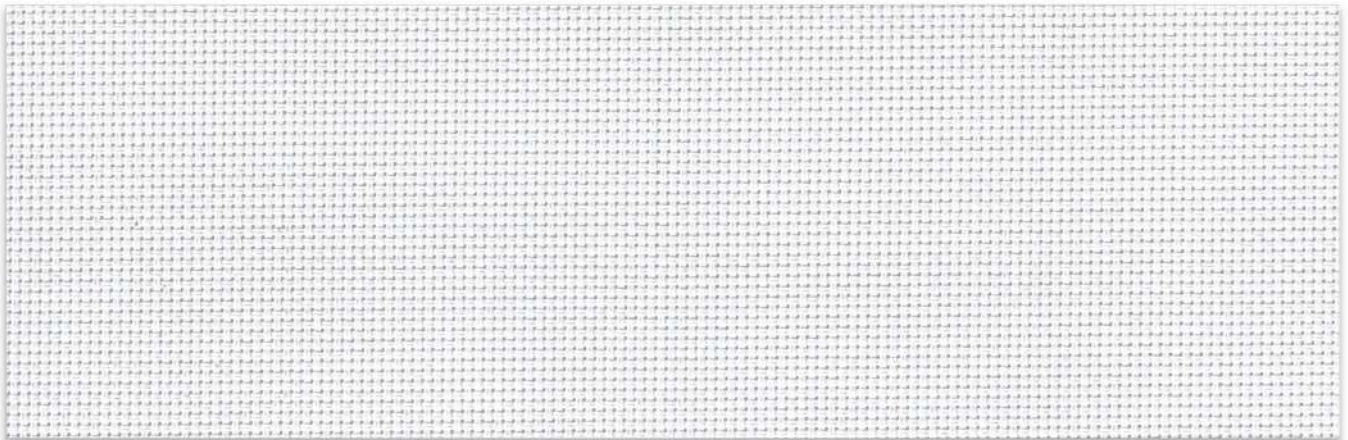
CV 3%



CV 5%

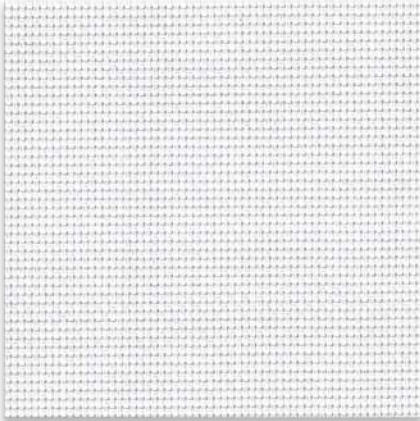


CV 10%



CVE 5%

Clear Vision | 3% - 5% Openness



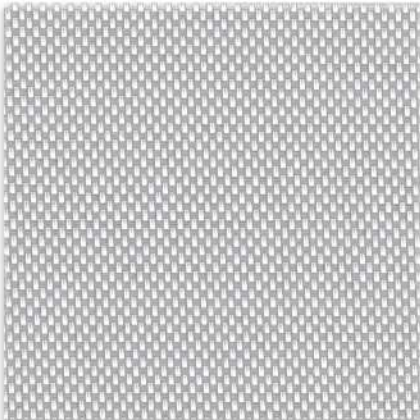
CV-0101 White * White



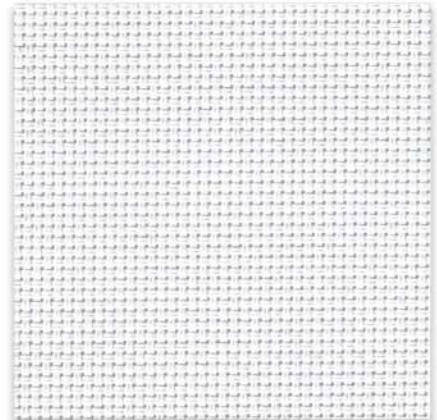
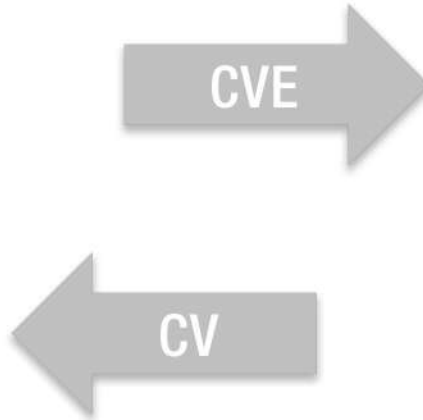
CV-0107 White * Sand



CV-0105 White * Grey



CV-0104 White * Black



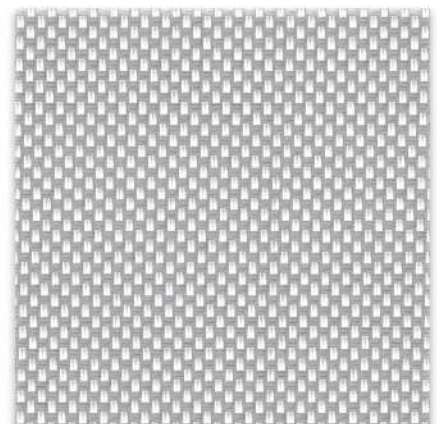
CVE-0101 White * White



CVE-0107 White * Sand



CVE-0105 White * Grey



CVE-0104 White * Black

Product Certificate

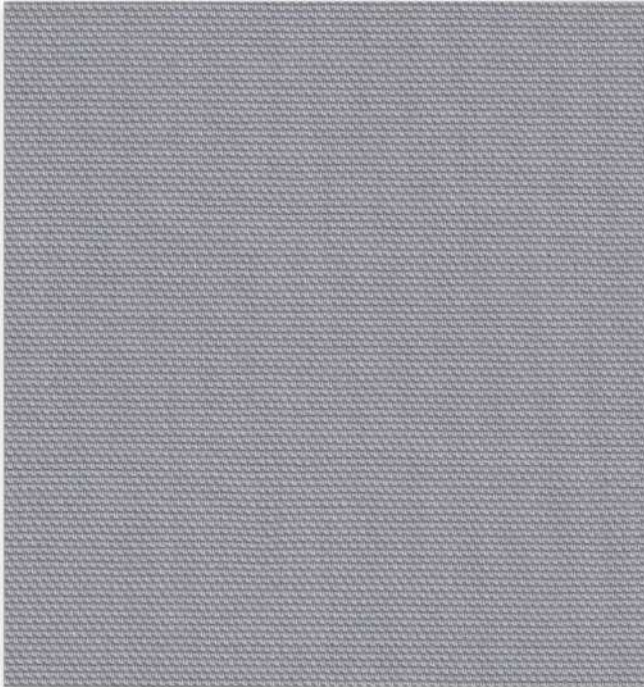
Fire, Smoke Classification	FR (US) - NFPA 701 TM#1 B1(CN) - GB17591	BS (GB) - 5867 Part2 TypeB B1(DE) - DIN4102	
Health & Safety	Oeko-tex Standard 100 class IV RoHS Directive (EU)2015/863 AATCC112-2014	Greenguard® Gold EN71 Part 3:1994 GB18586 - 2001	MIF Certificate
Bacterial & Fungal Resistance	ASTM G21-15 0 Grade None fungi growth ASTM E 2180-07 Reduce more than 99.9% of bacteria		
Colour fastness to light	Grade 8 ISO105 B02:2014 ≥4.0 AATCC TM 16.3-2014; Option 3; Xenon Arc Lamp		
Warranty	5 Years		



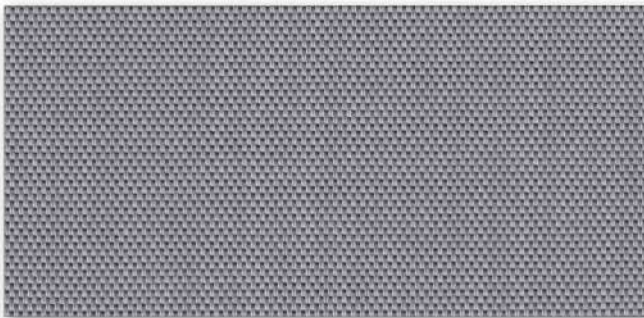
Technical Data

STYLE		CV01	CV03	CV05	CV10	CVE05
Composition		22% Polyester 78% PVC	22% Polyester 78% PVC	22% Polyester 78% PVC	22% Polyester 78% PVC	31% Polyester 69% PVC
Openness Factor		≈1%	≈3%	≈5%	≈10%	≈5%
UV Screen		Up to 99%	Up to 97%	Up to 94%	Up to 89%	Up to 95%
Width	inch	98"-118"	98"-118"	98"-118"	98"-118"	98"-118"
	cm	250-300	250-300	250-300	250-300	250-300
Weight	oz/yd ²	14.15±5%	13.46±5%	12.97±5%	10.91±5%	15.92±5%
(ISO 2286-2)	g/m ²	480 ± 5%	460 ± 5%	440 ± 5%	370 ± 5%	540 ± 5%
Thickness	inch	0.022 ± 5%	0.022 ± 5%	0.020 ± 5%	0.019 ± 5%	0.026 ± 5%
(ISO 2286-3)	mm	0.55 ± 5%	0.56 ± 5%	0.52 ± 5%	0.48 ± 5%	0.67 ± 5%
MECHANICAL RESISTANCE						
Breaking	Warp	≥1750 N/5cm	≥1700 N/5cm	≥1430 N/5cm	≥1250 N/5cm	≥3050 N/5cm
(ISO 13934-1)	Weft	≥1250 N/5cm	≥1400 N/5cm	≥1420 N/5cm	≥1200 N/5cm	≥2940 N/5cm
Tear	Warp	≥ 95 N	≥ 90 N	≥ 80 N	≥ 85 N	≥220 N
(ISO 4674)	Weft	≥ 70 N	≥ 70 N	≥ 85 N	≥ 90 N	≥220 N
Packing		32.8 yards	32.8 yards	32.8 yards	32.8 yards	32.8 yards
(Roll Length)		30 lm	30 lm	30 lm	30 lm	30 lm

Solar Blockout



SK0505 Grey



SK0540 Grey*Dark Grey



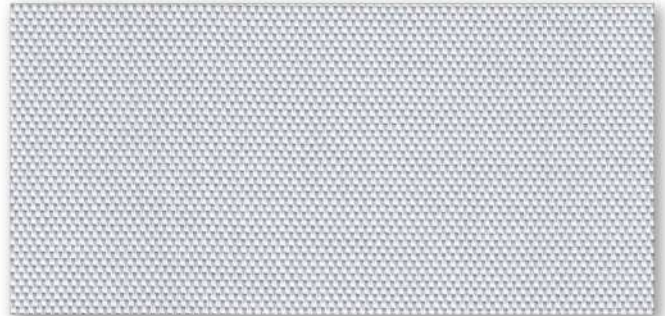
SK0405 Black*Grey



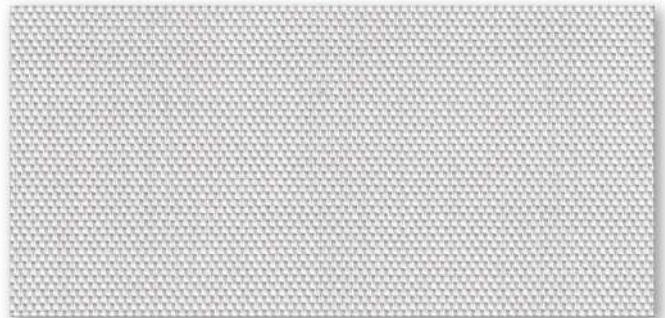
SK0539 Black*Dark Grey



SK0101 White* White



SK0105 White*Grey



SK0107 White*Sand



SK0406 Black*Bronze



SK0404 Black

Solar Blockout

Product Certificate

Fire, Smoke Classification	FR (US) - NFPA 701 TM#1	BS (GB) - 5867 Part2 TypeB
	B1 (CN) - GB17591	B1 (DE) – DIN4102
Health & Safety	Oeko-tex Standard 100 class IV	Greenguard® Gold
	RoHS Directive (EU)2015/863	EN71 Part 3:1994
	AATCC112-2014	GB18586 - 2001
Colour fastness to light	≥Grade 8 ISO105 B02:2014	
	≥4.0 AATCC TM 16.3-2014; Option 3; Xenon Arc Lamp	
Warranty	5 Years	



Technical Data

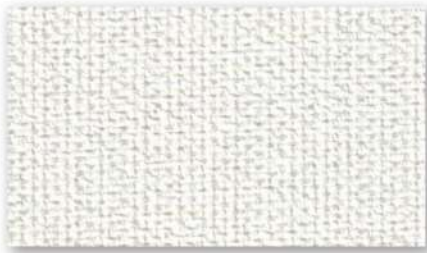
STYLE		NightFall		Mechanical Resistance		
Composition		25% Polyester – 75% PVC		Breaking	Warp	≥2700 N/5cm
Openness Factor		0%		(ISO 13934–1)	Weft	≥ 990 N/5cm
UV Screen		100%		Tear	Warp	≥110 N
Width	Inch	98" – 118"		(ISO 4674)	Weft	≥ 40 N
	cm	250 – 300		Packing		32.8 yards
Weight	oz/yd ²	16.95±5%		(Roll Length)		30 lm
	(ISO 2286–2) g/m ²	575 ± 5%				
Thickness	Inch	0.027 ± 5%				
	(ISO 2286–3) mm	0.69 ± 5%				

Care & Cleaning

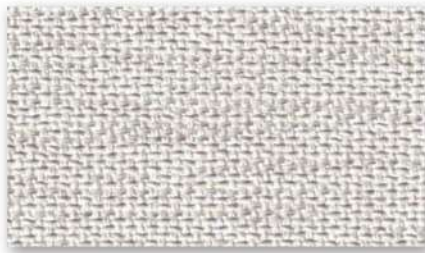
- ✧ Remove dust with vacuum cleaner or compressed air.
- ✧ Handle the fabric with care (clean and dry hands, or use of gloves).
- ✧ Do not scrub, use a plant-based eraser to remove superficial stains.
- ✧ Do not use solvents or any abrasive substance that might damage the face of fabric.
- ✧ All types of chemicals will cause permanent damage to the fabric. Therefore, if cleaning windows etc., the blind will have to be raised to avoid any direct or indirect spray or splatter of chemicals on the fabric.

Blockout - Deco | 0% Openness

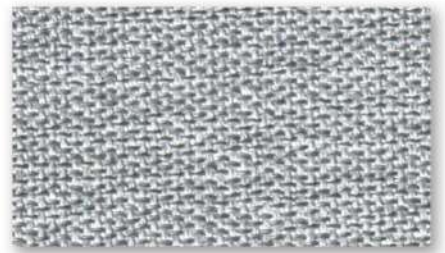
FABRIC SELECTOR



Prairie S2261-1



Prairie S2261-2



Prairie S2261-4



Lintes S2262-2



Lintes S2262-4



Lintes S2262-5



Mirabell S2265-1



Mirabell S2265-2



Mirabell S2265-3



Mirabell S2265-4



Monaco S2266-1



Monaco S2266-2



Monaco S2266-3



Monaco S2266-4



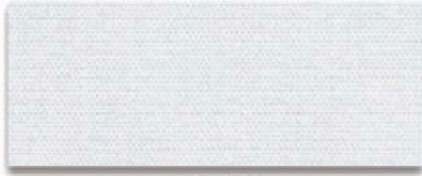
Monaco S2266-5

Blockout - Deco | 0% Openness

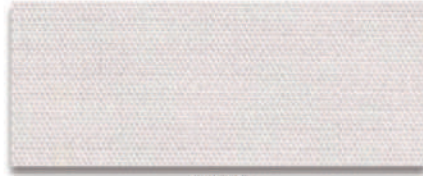
STYLE		Prairie	Lintex	Mirabell	Monaco
Composition		100% Polyester coated with Acrylic	100% Polyester coated with Acrylic	100% Polyester coated with Acrylic	100% Polyester coated with Acrylic
Openness Factor		0%	0%	0%	0%
UV Screen		100%	100%	100%	100%
Width	inch	98"-118"	98"-118"	98"-118"	98"-118"
	cm	250-300	250-300	250-300	250-300
Weight	oz/yd ²	12.68±5%	10.76±5%	10.61±5%	12.68±5%
	(ISO 2286-2) g/m ²	430 ± 5%	365 ± 5%	360 ± 5%	430 ± 5%
Thickness	inch	0.028 ± 5%	0.024 ± 5%	0.027 ± 5%	0.028 ± 5%
	(ISO 2286-3) mm	0.72 ± 5%	0.61 ± 5%	0.69 ± 5%	0.71 ± 5%
MECHANICAL RESISTANCE					
Breaking	Warp	≥1720 N/5cm	≥1170 N/5cm	≥1040 N/5cm	≥1980 N/5cm
	(ISO 13934-1) Weft	≥1300 N/5cm	≥1120 N/5cm	≥2150 N/5cm	≥2050 N/5cm
Tear	Warp	≥ 330 N	≥ 145 N	≥ 125 N	≥ 370 N
	(ISO 4674) Weft	≥ 240 N	≥ 240 N	≥ 325 N	≥ 590 N
Packing	Yards	27.4	27.4	27.4	27.4
	(Roll Length) lm	25	25	25	25

Blockout - Scala

0% Openness



WHITE



LINEN



PEARL



GREY



PEWTER



BRONZE



BLACK

Specifications

OPENNESS: 0%
COMPOSITION: 100% Polyester coated with Acrylic
MAX FABRIC WIDTH: 300cm
ROLL LENGTH: 25m
FABRIC WEIGHT: 400g ± 5%
FABRIC THICKNESS: 0.48mm ± 5%

FIRE CLASSIFICATION FR (US) - NFPA 701 (By Request)
 B1 (CN) - GB17591 (By Request)
HEALTH & SAFETY Greenguard® Gold, EN71 Part 3
 RoHS Directive (EU)2015/863,
BACTERIAL RESISTANCE ASTM G21, ASTM E 2180
COLOUR FASTNESS TO LIGHT Grade 6 ISO105 B02, ≥4.0 AATCC 16

Color	Fabric Properties					Fabric & Glass		Recommended Comfort Classification				
	Thermal		Optical			SHGC % Improvement	SHGC	Thermal Control	Visual			
	Ts	Rs	As	Rv	Tv				Daylight Utilization	Glare Control	Night Privacy	Outward Visibility
White (Foam Back)	0	75	25	91	0	58%	0.07	4	0	4	4	0

Ts (Solar transmittance): Proportion of solar energy transmitted through the fabric.

Rs (Solar reflectance): Proportion of solar radiation reflected by the fabric.

As (Solar absorptance): Proportion of solar radiation absorbed by the fabric.

Tv (Visible light transmittance): Total percentage of light radiation through the fabric over a wavelength of 380 to 780 nm.

Rv (visible light reflectance): Total percentage of light radiation reflected by the fabric over a wavelength of 380 to 780 nm.

SHGC (Total solar factor): Solar energy which actually penetrates into a room through the blind and glazing. A low value means good thermal performance.

Comfort Classification According to EN14501 :

0. Very little effect

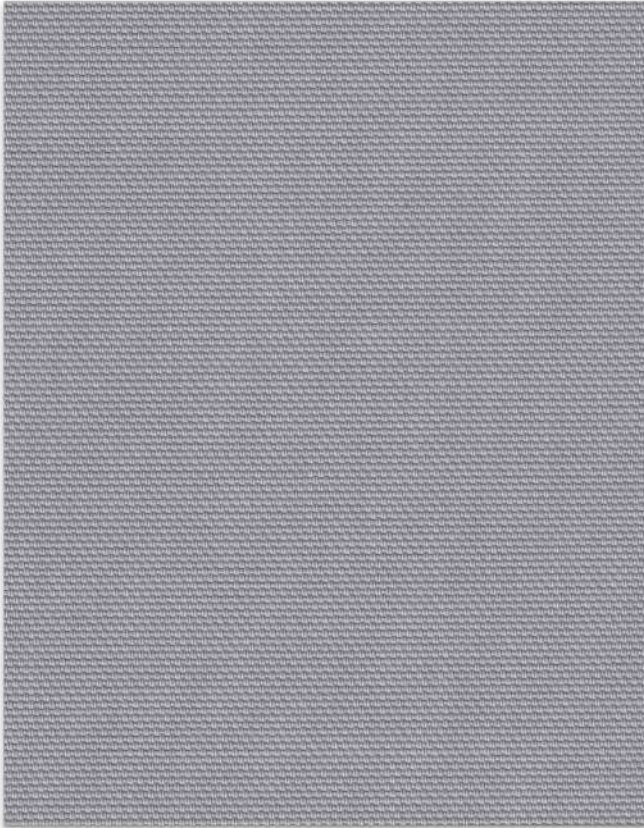
1. Little effect

2. Moderate effect

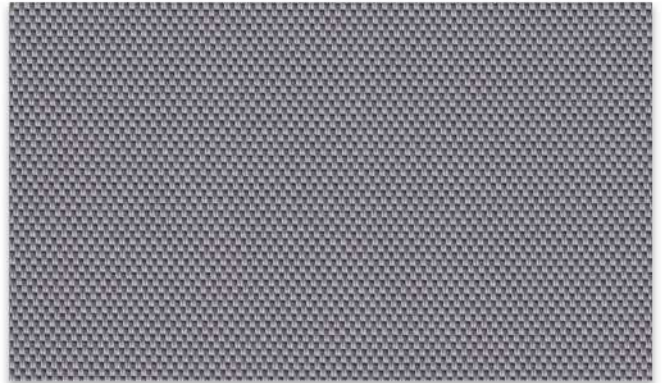
3. Good effect

4. Very good effect

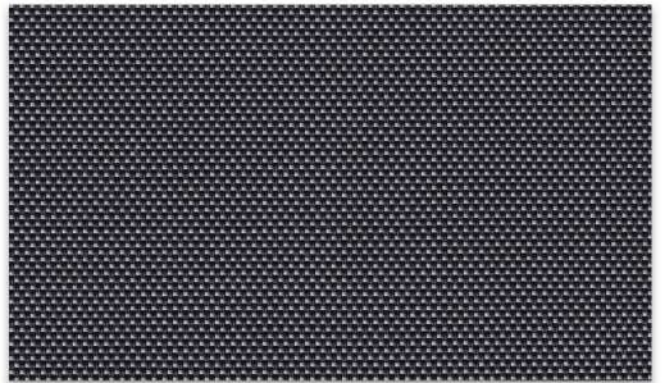
Night Fall



NF0505 Grey



NF0540 Grey*Dark Grey



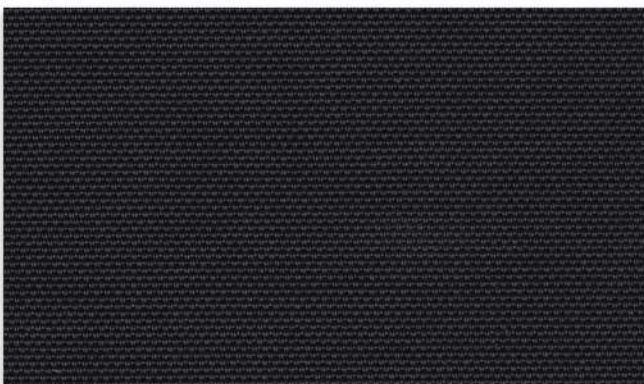
NF0405 Black*Grey



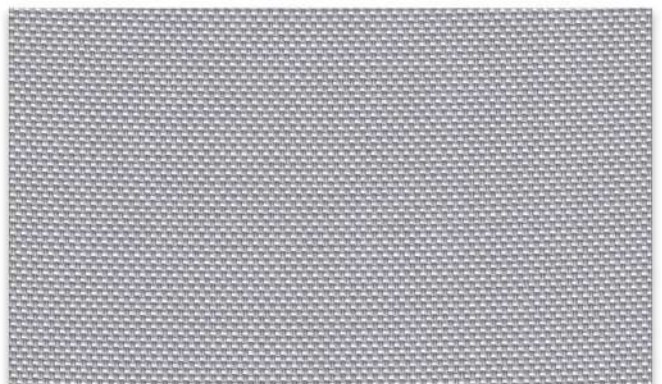
NF0406 Black*Bronze



NF0539 Black*Dark Grey



NF0404 Black



NF0501 Grey*White (RoomDarkning)

Product Certificate

Fire, Smoke Classification	FR (US) - NFPA 701 TM#1	BS (GB) - 5867 Part2 TypeB
	B1 (CN) - GB17591	B1 (DE) - DIN4102
Health & Safety	Oeko-tex Standard 100 class IV	Greenguard® Gold
	RoHS Directive (EU)2015/863	EN71 Part 3:1994
	AATCC112-2014	GB18586 - 2001
Colour fastness to light	≥Grade 8 ISO105 B02:2014	
	≥4.0 AATCC TM 16.3-2014; Option 3; Xenon Arc Lamp	
Warranty	5 Years	



Technical Data

STYLE		NightFall			
Composition		24% Polyester – 76% PVC		Mechanical Resistance	
Openness Factor		0%		Breaking	Warp ≥2250 N/5cm
UV Screen		Approximately 100%		(ISO 13934-1)	Weft ≥1830 N/5cm
Width	Inch	98" – 118"		Tear	Warp ≥130 N
	cm	250 – 300		(ISO 4674)	Weft ≥100 N
Weight	oz/yd ²	18.57±5%		Packing	32.8 yards
	(ISO 2286-2) g/m ²	630 ± 5%		(Roll Length)	30 lm
Thickness	Inch	0.028 ± 5%			
	(ISO 2286-3) mm	0.70 ± 5%			

Care & Cleaning

- ✦ Remove dust with vacuum cleaner or compressed air.
- ✦ Handle the fabric with care (clean and dry hands, or use of gloves).
- ✦ Do not scrub, use a plant-based eraser to remove superficial stains.
- ✦ Do not use solvents or any abrasive substance that might damage the face of fabric.
- ✦ All types of chemicals will cause permanent damage to the fabric. Therefore, if cleaning windows etc., the blind will have to be raised to avoid any direct or indirect spray or splatter of chemicals on the fabric.

Horizon Basket

1%-3%-5%-10% Openness

FABRIC SELECTOR



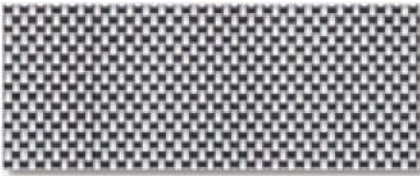
WHITE / WHITE



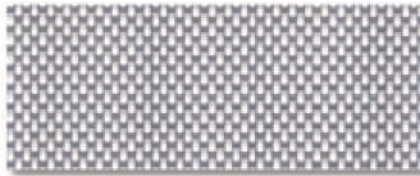
WHITE / LINEN



WHITE / PEARL



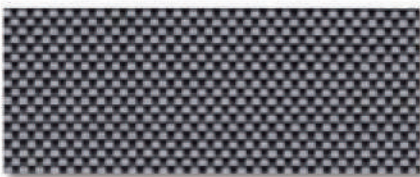
WHITE / BLACK



WHITE / GREY



WHITE / SAND



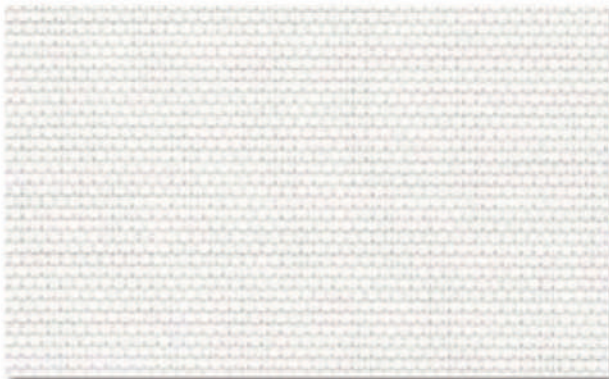
BLACK / PEARL



BLACK / BLACK



BLACK / BROWN



1% OPENNESS



3% OPENNESS



5% OPENNESS



10% OPENNESS

Specifications

OPENNESS:	Aprox 1%
COMPOSITION:	22%Polyester, 78% PVC
MAX FABRIC WIDTH:	300cm
ROLL LENGTH:	30m
FABRIC WEIGHT:	495g ± 5%
FABRIC THICKNESS:	0.72mm ± 5%

FIRE CLASSIFICATION	NFPA 701, B1-DIN4102, B1-GB17591 BS 5867 TypeB Part2
HEALTH & SAFETY	Oeko-tex 100, Greenguard® Gold RoHS Directive (EU)2015/863, EN71 Part 3
BACTERIAL RESISTANCE	ASTM G21, ASTM E 2180
COLOUR FASTNESS TO LIGHT	Grade 8 ISO105 B02, ≥4.0 AATCC 16

Color	Fabric Properties					Fabric & Glass		Recommended Comfort Classification				
	Thermal		Optical			SHGC % Improvement	SHGC	Thermal Control	Visual			
	Ts	Rs	As	Rv	Tv				Daylight Utilization	Glare Control	Night Privacy	Outward Visibility
0101 White*White	15	72	13	74	13	56%	0.21	2	2	1	2	1
0102 White*Linen	17	65	18	68	13	53%	0.23	2	2	1	2	1
0103 White*Pearl	17	60	23	62	14	47%	0.24	2	2	1	2	1
0104 White*Black	3	25	72	35	3	40%	0.28	2	1	2	2	1
0105 White*Grey	8	45	47	50	5	40%	0.25	2	1	2	2	1
0107 White*Sand	12	55	33	59	8	46%	0.23	2	1	2	2	1
0403 Black*Pearl	0	10	89	12	0	18%	0.34	2	0	3	3	1
0404 Black*Black	0	3	97	3	0	13%	0.36	1	0	3	3	1
0406 Black*Brown	1	5	94	5	1	14%	0.35	1	0	3	3	1

OPENNESS:	Aprox 3%
COMPOSITION:	22%Polyester, 78% PVC
MAX FABRIC WIDTH:	300cm
ROLL LENGTH:	30m
FABRIC WEIGHT:	485g ± 5%
FABRIC THICKNESS:	0.70mm ± 5%

FIRE CLASSIFICATION	NFPA 701, B1-DIN4102, B1-GB17591 BS 5867 TypeB Part2
HEALTH & SAFETY	Oeko-tex 100, Greenguard® Gold RoHS Directive (EU)2015/863, EN71 Part 3
BACTERIAL RESISTANCE	ASTM G21, ASTM E 2180
COLOUR FASTNESS TO LIGHT	Grade 8 ISO105 B02, ≥4.0 AATCC 16

Color	Fabric Properties					Fabric & Glass		Recommended Comfort Classification				
	Thermal		Optical			SHGC % Improvement	SHGC	Thermal Control	Visual			
	Ts	Rs	As	Rv	Tv				Daylight Utilization	Glare Control	Night Privacy	Outward Visibility
0101 White*White	17	71	12	74	24	46%	0.26	2	2	1	2	1
0102 White*Linen	20	66	14	74	16	48%	0.25	2	2	1	2	1
0103 White*Pearl	15	58	27	66	12	46%	0.26	2	2	1	2	1
0104 White*Black	8	26	66	40	7	40%	0.29	2	1	1	2	1
0105 White*Grey	9	49	42	55	7	44%	0.27	2	1	1	2	1
0107 White*Sand	18	59	23	62	13	46%	0.26	2	1	1	2	1
0403 Black*Pearl	6	14	80	15	6	38%	0.30	2	1	3	2	2
0404 Black*Black	5	3	92	3	5	35%	0.31	1	1	3	2	2
0406 Black*Brown	6	8	86	7	5	38%	0.30	1	1	3	2	2

Specifications

OPENNESS: Aprox 5%
COMPOSITION: 22%Polyester, 78% PVC
MAX FABRIC WIDTH: 300cm
ROLL LENGTH: 30m
FABRIC WEIGHT: 460g ± 5%
FABRIC THICKNESS: 0.64mm ± 5%

FIRE CLASSIFICATION NFPA 701, B1-DIN4102, B1-GB17591
 BS 5867 TypeB Part2
HEALTH & SAFETY Oeko-tex 100, Greenguard® Gold
 RoHS Directive (EU)2015/863, EN71 Part 3
BACTERIAL RESISTANCE ASTM G21, ASTM E 2180
COLOUR FASTNESS TO LIGHT Grade 8 ISO105 B02, ≥4.0 AATCC 16

Color	Fabric Properties					Fabric & Glass		Recommended Comfort Classification				
	Thermal		Optical			SHGC % Improvement	SHGC	Thermal Control	Visual			
	Ts	Rs	As	Rv	Tv				Daylight Utilization	Glare Control	Night Privacy	Outward Visibility
0101 White*White	19	72	9	80	15	48%	0.25	2	2	0	1	1
0102 White*Linen	22	63	15	71	18	48%	0.25	2	2	0	1	1
0103 White*Pearl	18	57	25	65	15	46%	0.26	2	2	0	1	2
0104 White*Black	12	27	61	45	11	40%	0.29	2	1	0	1	2
0105 White*Grey	12	44	44	51	10	44%	0.27	2	1	0	1	2
0107 White*Sand	20	59	21	63	16	46%	0.26	2	1	0	1	2
0403 Black*Pearl	10	14	76	17	10	38%	0.30	1	1	1	1	3
0404 Black*Black	7	3	90	3	7	35%	0.31	1	1	1	1	3
0406 Black*Brown	8	5	87	6	8	35%	0.31	1	1	1	1	3

OPENNESS: Aprox 10%
COMPOSITION: 22%Polyester, 78% PVC
MAX FABRIC WIDTH: 300cm
ROLL LENGTH: 30m
FABRIC WEIGHT: 410g ± 5%
FABRIC THICKNESS: 0.60mm ± 5%

FIRE CLASSIFICATION NFPA 701, B1-DIN4102, B1-GB17591
 BS 5867 TypeB Part2
HEALTH & SAFETY Oeko-tex 100, Greenguard® Gold
 RoHS Directive (EU)2015/863, EN71 Part 3
BACTERIAL RESISTANCE ASTM G21, ASTM E 2180
COLOUR FASTNESS TO LIGHT Grade 8 ISO105 B02, ≥4.0 AATCC 16

Color	Fabric Properties					Fabric & Glass		Recommended Comfort Classification				
	Thermal		Optical			SHGC % Improvement	SHGC	Thermal Control	Visual			
	Ts	Rs	As	Rv	Tv				Daylight Utilization	Glare Control	Night Privacy	Outward Visibility
0101 White*White	23	66	11	75	19	48%	0.25	2	2	0	0	2
0102 White*Linen	25	60	15	68	21	46%	0.26	2	2	0	1	2
0103 White*Pearl	24	52	24	60	21	46%	0.26	2	2	0	1	2
0104 White*Black	19	23	58	47	18	40%	0.29	2	2	0	1	3
0105 White*Grey	18	43	39	50	15	44%	0.27	2	2	0	1	3
0107 White*Sand	26	55	19	60	21	46%	0.26	2	2	0	1	3
0403 Black*Pearl	16	14	70	17	15	38%	0.30	1	1	1	1	3
0404 Black*Black	13	3	84	3	13	35%	0.31	1	1	1	1	3
0406 Black*Brown	14	7	79	6	13	38%	0.30	1	1	1	1	3

Ts (Solar transmittance): Proportion of solar energy transmitted through the fabric.

Rs (Solar reflectance): Proportion of solar radiation reflected by the fabric.

As (Solar absorptance): Proportion of solar radiation absorbed by the fabric.

Tv (Visible light transmittance): Total percentage of light radiation through the fabric over a wavelength of 380 to 780 nm.

Rv (visible light reflectance): Total percentage of light radiation reflected by the fabric over a wavelength of 380 to 780 nm.

SHGC (Total solar factor): Solar energy which actually penetrates into a room through the blind and glazing. A low value means good thermal performance.

Comfort Classification According to EN14501 :

0. Very little effect

1. Little effect

2. Moderate effect

3. Good effect

4. Very good effect

Solar Block | 0% Openness



BLACK/BLACK



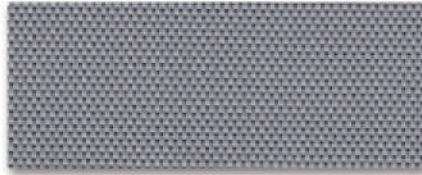
BLACK/GREY



BLACK/BROWN



GREY/GREY



GREY/DARK GREY

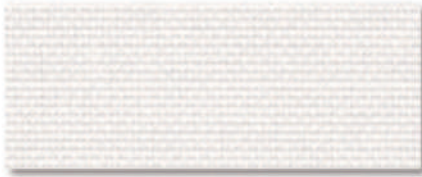
Specifications

OPENNESS:	0%
COMPOSITION:	25% Polyester - 75% PVC
MAX FABRIC WIDTH:	300cm
ROLL LENGTH:	30m
FABRIC WEIGHT:	484g ± 5%
FABRIC THICKNESS:	0.61mm ± 5%

FIRE CLASSIFICATION	FR(US) - NFPA 701 B1(CN) - GB17591 BS(GB) - 5867 Part2 TypeB B1(DE) - DIN4102
HEALTH & SAFETY	Greenguard® Gold , EN71 Part3 RoHS Directive (EU)2015/863
COLOUR FASTNESS TO LIGHT	≥4.0 AATCC 16

Nova Basket

1%-3%-5%-10% Openness



WHITE / WHITE



WHITE / LINEN



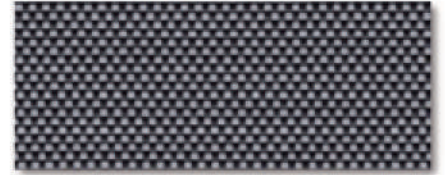
WHITE / PEARL



WHITE / GREY



WHITE / SAND



BLACK / PEARL



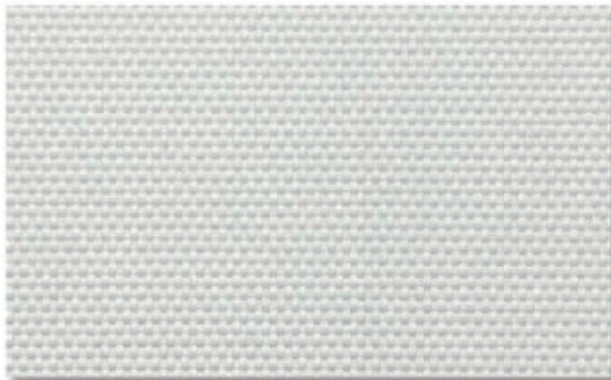
BLACK / BLACK



BLACK / GREY



BLACK / BROWN



1% OPENNESS



3% OPENNESS



5% OPENNESS



10% OPENNESS

Specifications

OPENNESS:	Aprox 1%
COMPOSITION:	25%Polyester, 75% PVC
MAX FABRIC WIDTH:	300cm
ROLL LENGTH:	30m
FABRIC WEIGHT:	482g ± 5%
FABRIC THICKNESS:	0.72mm ± 5%

FIRE CLASSIFICATION	NFPA 701, B1-DIN4102, B1-GB17591 BS 5867 TypeB Part2
HEALTH & SAFETY	Oeko-tex 100, Greenguard® Gold RoHS Directive (EU)2015/863, EN71 Part 3
BACTERIAL RESISTANCE	ASTM G21, ASTM E 2180
COLOUR FASTNESS TO LIGHT	Grade 8 ISO105 B02, ≥4.0 AATCC 16

Color	Fabric Properties					Fabric & Glass		Recommended Comfort Classification				
	Thermal		Optical			SHGC % Improvement	SHGC	Thermal Control	Visual			
	Ts	Rs	As	Rv	Tv				Daylight Utilization	Glare Control	Night Privacy	Outward Visibility
0101 White*White	16	72	12	74	13	56%	0.21	2	2	1	2	1
0102 White*Linen	17	65	18	68	13	53%	0.23	2	2	1	2	1
0103 White*Pearl	17	60	23	62	14	47%	0.24	2	2	1	2	1
0105 White*Grey	8	45	47	50	5	40%	0.25	2	1	2	2	1
0107 White*Sand	12	55	33	59	8	46%	0.23	2	1	2	2	1
0403 Black*Pearl	0	11	89	12	0	18%	0.34	2	0	3	3	1
0404 Black*Black	0	3	97	3	0	13%	0.36	1	0	3	3	1
0405 Black*Grey	0	8	92	8	0	16%	0.35	1	0	3	3	1
0406 Black*Brown	1	5	94	5	1	14%	0.35	1	0	3	3	1

OPENNESS:	Aprox 3%
COMPOSITION:	25%Polyester, 75% PVC
MAX FABRIC WIDTH:	300cm
ROLL LENGTH:	30m
FABRIC WEIGHT:	465g ± 5%
FABRIC THICKNESS:	0.65mm ± 5%

FIRE CLASSIFICATION	NFPA 701, B1-DIN4102, B1-GB17591 BS 5867 TypeB Part2
HEALTH & SAFETY	Oeko-tex 100, Greenguard® Gold RoHS Directive (EU)2015/863, EN71 Part 3
BACTERIAL RESISTANCE	ASTM G21, ASTM E 2180
COLOUR FASTNESS TO LIGHT	Grade 8 ISO105 B02, ≥4.0 AATCC 16

Color	Fabric Properties					Fabric & Glass		Recommended Comfort Classification				
	Thermal		Optical			SHGC % Improvement	SHGC	Thermal Control	Visual			
	Ts	Rs	As	Rv	Tv				Daylight Utilization	Glare Control	Night Privacy	Outward Visibility
0101 White*White	18	70	12	72	15	54%	0.23	2	2	1	2	1
0102 White*Linen	15	59	26	63	11	48%	0.24	2	2	1	2	1
0103 White*Pearl	14	52	34	57	11	44%	0.25	2	2	1	2	1
0105 White*Grey	9	40	51	44	7	36%	0.27	2	1	1	2	1
0107 White*Sand	14	51	35	54	10	42%	0.26	2	1	1	2	1
0403 Black*Pearl	4	13	83	15	4	19%	0.34	2	1	3	2	2
0404 Black*Black	3	3	94	3	3	13%	0.37	1	1	3	2	2
0405 Black*Grey	3	9	88	10	3	16%	0.35	1	1	3	2	2
0406 Black*Brown	3	6	91	6	3	14%	0.36	1	1	3	2	2

Specifications

OPENNESS: **Aprox 5%**
COMPOSITION: 25%Polyester, 75% PVC
MAX FABRIC WIDTH: 300cm
ROLL LENGTH: 30m
FABRIC WEIGHT: 420g ± 5%
FABRIC THICKNESS: 0.62mm ± 5%

FIRE CLASSIFICATION NFPA 701, B1-DIN4102, B1-GB17591
 BS 5867 TypeB Part2
HEALTH & SAFETY Oeko-tex 100, Greenguard® Gold
 RoHS Directive (EU)2015/863, EN71 Part 3
BACTERIAL RESISTANCE ASTM G21, ASTM E 2180
COLOUR FASTNESS TO LIGHT Grade 8 ISO105 B02, ≥4.0 AATCC 16

Color	Fabric Properties					Fabric & Glass		Recommended Comfort Classification				
	Thermal		Optical			SHGC % Improvement	SHGC	Thermal Control	Visual			
	Ts	Rs	As	Rv	Tv				Daylight Utilization	Glare Control	Night Privacy	Outward Visibility
0101 White*White	21	67	12	69	17	51%	0.25	2	2	0	1	1
0102 White*Linen	18	56	26	60	14	46%	0.25	2	2	0	1	1
0103 White*Pearl	16	49	35	54	13	41%	0.27	2	2	0	1	2
0105 White*Grey	12	38	50	40	9	33%	0.30	2	1	0	1	2
0107 White*Sand	14	46	40	50	12	40%	0.28	2	1	0	1	2
0403 Black*Pearl	8	15	77	17	8	19%	0.35	1	1	1	1	3
0404 Black*Black	6	3	91	3	3	11%	0.37	1	1	1	1	3
0405 Black*Grey	7	3	90	3	7	12%	0.38	1	1	1	1	3
0406 Black*Brown	7	6	87	6	7	14%	0.38	1	1	1	1	3

OPENNESS: **Aprox 10%**
COMPOSITION: 25%Polyester, 75% PVC
MAX FABRIC WIDTH: 300cm
ROLL LENGTH: 30m
FABRIC WEIGHT: 380g ± 5%
FABRIC THICKNESS: 0.58mm ± 5%

FIRE CLASSIFICATION NFPA 701, B1-DIN4102, B1-GB17591
 BS 5867 TypeB Part2
HEALTH & SAFETY Oeko-tex 100, Greenguard® Gold
 RoHS Directive (EU)2015/863, EN71 Part 3
BACTERIAL RESISTANCE ASTM G21, ASTM E 2180
COLOUR FASTNESS TO LIGHT Grade 8 ISO105 B02, ≥4.0 AATCC 16

Color	Fabric Properties					Fabric & Glass		Recommended Comfort Classification				
	Thermal		Optical			SHGC % Improvement	SHGC	Thermal Control	Visual			
	Ts	Rs	As	Rv	Tv				Daylight Utilization	Glare Control	Night Privacy	Outward Visibility
0101 White*White	21	61	18	60	17	45%	0.26	2	2	0	0	2
0102 White*Linen	18	56	26	60	14	45%	0.26	2	2	0	1	2
0103 White*Pearl	16	49	35	54	13	41%	0.27	2	2	0	1	2
0105 White*Grey	18	36	46	38	15	31%	0.33	2	2	0	1	3
0107 White*Sand	18	48	34	23	12	40%	0.30	2	2	0	1	3
0403 Black*Pearl	12	17	71	19	10	18%	0.35	1	1	1	1	3
0404 Black*Black	10	3	87	3	6	10%	0.37	1	1	1	1	3
0405 Black*Grey	11	4	85	5	10	11%	0.38	1	1	1	1	3
0406 Black*Brown	11	5	84	8	10	13%	0.38	1	1	1	1	3

Ts (Solar transmittance): Proportion of solar energy transmitted through the fabric.

Rs (Solar reflectance): Proportion of solar radiation reflected by the fabric.

As (Solar absorptance): Proportion of solar radiation absorbed by the fabric.

Tv (Visible light transmittance): Total percentage of light radiation through the fabric over a wavelength of 380 to 780 nm.

Rv (visible light reflectance): Total percentage of light radiation reflected by the fabric over a wavelength of 380 to 780 nm.

SHGC (Total solar factor): Solar energy which actually penetrates into a room through the blind and glazing. A low value means good thermal performance.

Comfort Classification According to EN14501 :

0. Very little effect

1. Little effect

2. Moderate effect

3. Good effect

4. Very good effect

Nova Twill

1%-3% Openness



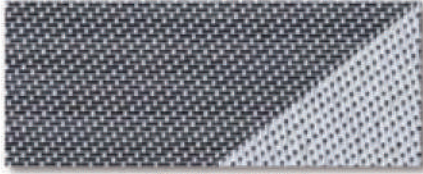
WHITE / WHITE



WHITE / LINEN



WHITE / PEARL



WHITE / BLACK



WHITE / GREY



WHITE / SAND



BLACK / PEARL



BLACK / BLACK



BLACK / BROWN



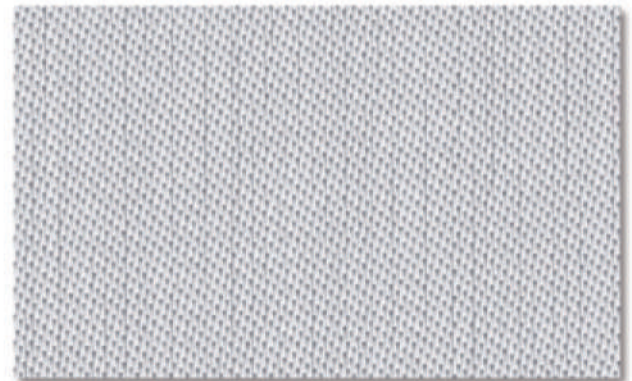
1% OPENNESS FACE



1% OPENNESS BACK



3% OPENNESS FACE



3% OPENNESS BACK

Specifications

OPENNESS: Aprox 1%
COMPOSITION: 25%Polyester, 75% PVC
MAX FABRIC WIDTH: 300cm
ROLL LENGTH: 30m
FABRIC WEIGHT: 450g ± 5%
FABRIC THICKNESS: 0.65mm ± 5%

FIRE CLASSIFICATION NFPA 701, B1-DIN4102, B1-GB17591
 BS 5867 TypeB Part2
HEALTH & SAFETY Oeko-tex 100, Greenguard® Gold
 RoHS Directive (EU)2015/863, EN71 Part 3
BACTERIAL RESISTANCE ASTM G21, ASTM E 2180
COLOUR FASTNESS TO LIGHT Grade 8 ISO105 B02, ≥4.0 AATCC 16

Color	Side	Fabric Properties					Fabric & Glass		Recommended Comfort Classification				
		Thermal		Optical			SHGC % Improvement	SHGC	Thermal Control	Visual			
		Ts	Rs	As	Rv	Tv			Daylight Utilization	Glare Control	Night Privacy	Outward Visibility	
0101 White*White	A	17	66	17	73	14	55%	0.22	2	2	1	2	0
0102 White*Linen	A	15	63	22	68	11	52%	0.22	2	2	1	2	1
	B	15	57	28	60	11	46%	0.24					
0103 White*Pearl	A	15	57	28	60	11	46%	0.24	2	2	1	2	1
	B	14	60	26	66	11	51%	0.22					
0104 White*Black	A	7	47	46	47	6	42%	0.27	2	1	3	2	2
	B	9	22	69	32	8	30%	0.29					
0105 White*Grey	A	11	54	35	60	7	47%	0.23	2	1	2	2	1
	B	11	36	53	38	7	33%	0.29					
0107 White*Sand	A	14	60	26	65	10	50%	0.22	2	1	2	2	1
	B	14	49	37	50	10	40%	0.26					
0403 Black*Pearl	A	0	6	94	6	0	15%	0.35	1	1	3	3	1
	B	0	16	84	18	0	21%	0.32					
0404 Black*Black	A	0	3	97	3	0	13%	0.36	1	1	3	3	1
0406 Black*Brown	A	0	4	96	4	0	14%	0.36	1	1	3	3	1
	B	0	6	94	6	0	15%	0.35					

Specifications

OPENNESS: **Aprox 3%**
 COMPOSITION: 22%Polyester, 78% PVC
 MAX FABRIC WIDTH: 300cm
 ROLL LENGTH: 30m
 FABRIC WEIGHT: 430g ± 5%
 FABRIC THICKNESS: 0.63mm ± 5%

FIRE CLASSIFICATION: NFPA 701, B1-DIN4102, B1-GB17591
 BS 5867 TypeB Part2
 HEALTH & SAFETY: Oeko-tex 100, Greenguard® Gold
 RoHS Directive (EU)2015/863, EN71 Part 3
 BACTERIAL RESISTANCE: ASTM G21, ASTM E 2180
 COLOUR FASTNESS TO LIGHT: Grade 8 ISO105 B02, ≥4.0 AATCC 16

Color	Side	Fabric Properties					Fabric & Glass		Recommended Comfort Classification				
		Thermal		Optical			SHGC % Improvement	SHGC	Thermal Control	Visual			
		Ts	Rs	As	Rv	Tv			Daylight Utilization	Glare Control	Night Privacy	Outward Visibility	
0101 White*White	A	19	64	17	71	16	53%	0.23	2	2	1	2	0
0102 White*Linen	A	19	63	18	67	13	53%	0.23	2	2	1	2	1
	B	17	62	21	59	13	45%	0.25					
0103 White*Pearl	A	17	56	27	64	12	49%	0.24	2	2	1	2	1
	B	15	58	27	53	12	41%	0.27					
0104 White*Black	A	8	43	49	34	7	39%	0.27	2	1	2	2	2
	B	9	20	71	8	8	27%	0.29					
0105 White*Grey	A	15	48	37	57	7	45%	0.24	2	1	1	2	1
	B	11	52	37	36	7	31%	0.30					
0107 White*Sand	A	11	34	55	62	11	48%	0.24	2	2	1	2	1
	B	15	58	27	48	11	38%	0.28					
0403 Black*Pearl	A	15	47	38	7	2	15%	0.36	1	1	2	2	1
	B	2	6	92	20	2	22%	0.32					
0404 Black*Black	A	2	17	81	3	2	13%	0.37	1	1	2	2	1
0406 Black*Brown	A	2	4	94	4	2	14%	0.36	1	1	2	2	1
	B	2	7	91	7	2	15%	0.36					

Ts (Solar transmittance): Proportion of solar energy transmitted through the fabric.

Rs (Solar reflectance): Proportion of solar radiation reflected by the fabric.

As (Solar absorptance): Proportion of solar radiation absorbed by the fabric.

Tv (Visible light transmittance): Total percentage of light radiation through the fabric over a wavelength of 380 to 780 nm.

Rv (visible light reflectance): Total percentage of light radiation reflected by the fabric over a wavelength of 380 to 780 nm.

SHGC (Total solar factor): Solar energy which actually penetrates into a room through the blind and glazing. A low value means good thermal performance.

Comfort Classification According to EN14501 :

- 0. Very little effect
- 1. Little effect
- 2. Moderate effec
- 3. Good effect
- 4. Very good effec

External Basket

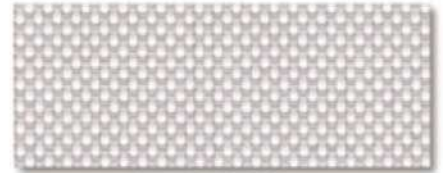
1%-3%-5% Openness



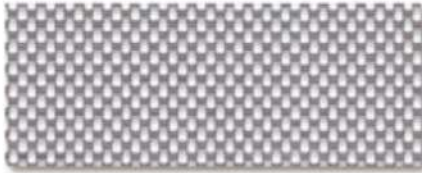
WHITE / WHITE



WHITE / LINEN



WHITE / PEARL



WHITE / GREY



WHITE / SAND



BLACK / PEARL



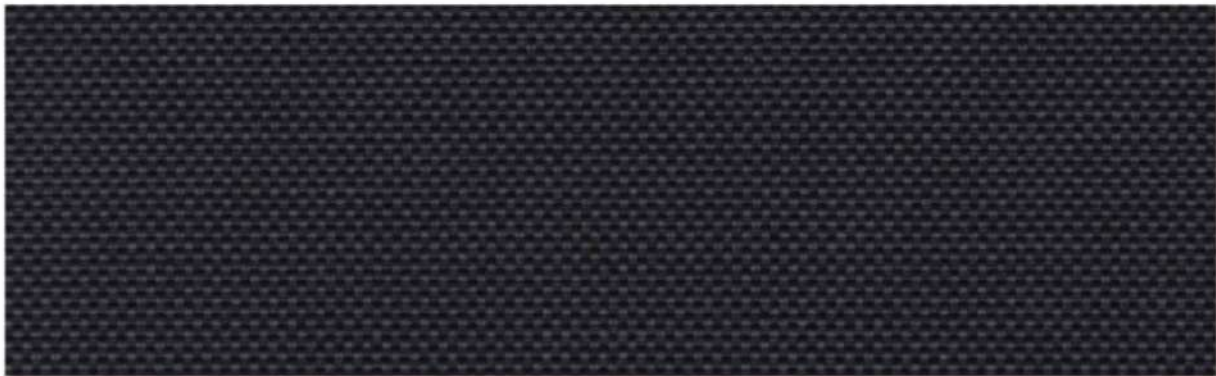
BLACK / BLACK



BLACK / GREY



BLACK / BROWN



3% OPENNESS



5% OPENNESS

FABRIC SELECTOR

Specifications

OPENNESS: **Aprox 3%**
COMPOSITION: 26%Polyester, 74% PVC
MAX FABRIC WIDTH: 300cm
ROLL LENGTH: 30m
FABRIC WEIGHT: 570g ± 5%
FABRIC THICKNESS: 0.80mm ± 5%

FIRE CLASSIFICATION NFPA 701, B1-DIN4102, B1-GB17591
 BS 5867 TypeB Part2
HEALTH & SAFETY Oeko-tex 100, Greenguard® Gold
 RoHS Directive (EU)2015/863, EN71 Part 3
BACTERIAL RESISTANCE ASTM G21, ASTM E 2180
COLOUR FASTNESS TO LIGHT Grade 8 ISO105 B02, ≥4.0 AATCC 16

Color	Fabric Properties					Fabric & Glass		Recommended Comfort Classification				
	Thermal		Optical			SHGC % Improvement	SHGC	Thermal Control	Visual			
	Ts	Rs	As	Rv	Tv				Daylight Utilization	Glare Control	Night Privacy	Outward Visibility
0101 White*White	17	67	16	73	14	55%	0.22	2	2	1	2	1
0102 White*Linen	14	59	27	63	11	48%	0.23	2	2	1	2	1
0103 White*Pearl	13	52	35	57	10	44%	0.25	2	2	1	2	1
0105 White*Grey	9	41	50	45	7	36%	0.27	2	1	1	2	2
0107 White*Sand	13	52	35	54	10	42%	0.25	2	2	1	2	1
0403 Black*Pearl	6	15	79	17	5	20%	0.34	2	1	3	2	2
0404 Black*Black	5	3	92	3	5	13%	0.38	1	1	3	2	2
0405 Black*Grey	5	10	85	10	5	16%	0.36	1	1	3	2	2
0406 Black*Brown	5	6	89	6	5	14%	0.37	1	1	3	2	2

OPENNESS: **Aprox 5%**
COMPOSITION: 26%Polyester, 74% PVC
MAX FABRIC WIDTH: 300cm
ROLL LENGTH: 30m
FABRIC WEIGHT: 545g ± 5%
FABRIC THICKNESS: 0.75mm ± 5%

FIRE CLASSIFICATION NFPA 701, B1-DIN4102, B1-GB17591
 BS 5867 TypeB Part2
HEALTH & SAFETY Oeko-tex 100, Greenguard® Gold
 RoHS Directive (EU)2015/863, EN71 Part 3
BACTERIAL RESISTANCE ASTM G21, ASTM E 2180
COLOUR FASTNESS TO LIGHT Grade 8 ISO105 B02, ≥4.0 AATCC 16

Color	Fabric Properties					Fabric & Glass		Recommended Comfort Classification				
	Thermal		Optical			SHGC % Improvement	SHGC	Thermal Control	Visual			
	Ts	Rs	As	Rv	Tv				Daylight Utilization	Glare Control	Night Privacy	Outward Visibility
0101 White*White	23	66	11	72	20	54%	0.25	2	2	0	1	1
0102 White*Linen	16	58	26	61	13	46%	0.24	2	2	0	1	1
0103 White*Pearl	15	50	35	55	12	42%	0.26	2	2	0	1	2
0105 White*Grey	11	39	50	42	9	34%	0.28	2	2	0	1	2
0107 White*Sand	14	49	37	51	11	40%	0.27	2	2	0	1	2
0403 Black*Pearl	8	16	76	18	8	20%	0.35	1	1	1	1	3
0404 Black*Black	7	3	90	3	7	13%	0.38	1	1	1	1	3
0405 Black*Grey	6	11	83	10	6	16%	0.36	1	1	1	1	3
0406 Black*Brown	7	6	87	6	7	14%	0.37	1	1	1	1	3

Ts (Solar transmittance): Proportion of solar energy transmitted through the fabric.

Rs (Solar reflectance): Proportion of solar radiation reflected by the fabric.

As (Solar absorptance): Proportion of solar radiation absorbed by the fabric.

Tv (Visible light transmittance): Total percentage of light radiation through the fabric over a wavelength of 380 to 780 nm.

Rv (visible light reflectance): Total percentage of light radiation reflected by the fabric over a wavelength of 380 to 780 nm.

SHGC (Total solar factor): Solar energy which actually penetrates into a room through the blind and glazing. A low value means good thermal performance.

Comfort Classification According to EN14501 :

0. Very little effect

1. Little effect

2. Moderate effect

3. Good effect

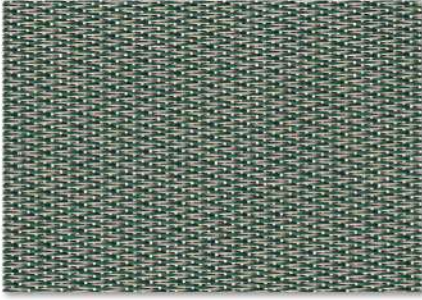
4. Very good effect

External Basket

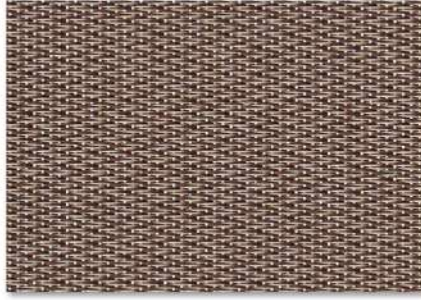
1%-3%-5% Openness

Reference	EB1 - External Basket 1%	
Characteristic	Open basket weave design for optimum transparency and control of natural light	
Application	Ext.: Roller blinds, Projection shades, Velums, Tensile structures*, Printing, Space fitting, Int. : Roller blinds, Decorative panels, Velums, Tensile structures*, Stretched ceilings, Printing, Space fitting,	
Composition	26% Polyester -74% PVC	
Weave	Basket Weave 2 x 2	
Density/inch	ASTM D3775-07	Warp: 18.0 ± 5% Weft : 13.0 ± 5%
Weight/m²	ISO 2286 - 2	600g ± 5%
Thickness	ISO 2286 - 3	0.88 mm ± 5%
Openess factor	≈1%	
UV Screen	Up to 99%	
Fire,Smoke Classification	FR (US) - NFPA 701 TM#1 B1(CN) - GB50222BS (GB) - 5867 Part2 TypeB	
Health/Safety	No chemicals harmful to health and safety of users - Oeko-tex Standard 100 class IV Guarantee of indoor air quality(VOC) - Greenguard® EN71 Part 3:1994 RoHS - Lead Free GB18586 - 2001	
Width	200 - 250 - 300 cm	
Number of colors	9	
Mechanical Resistance		
Breaking	SO 13934-1	Warp: ≥ 2850 N/5cm Weft : ≥ 2000 N/5cm
Tear	ISO 4674	Warp: ≥ 260 N Weft : ≥ 170 N
Elongation to break point	SO 13934-1	Warp: < 16% Weft : < 14%
Colour fastness to light (Scale of 8)	ISO 105 B02	Grade 8
Packing	Rolls of 30lm	
Warranty	5 years	

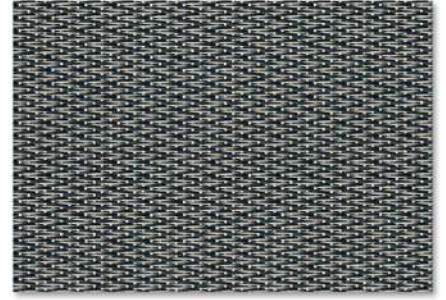
Leisure



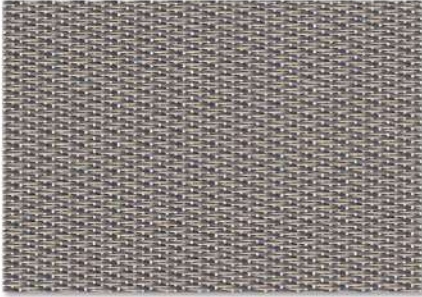
1011-0541



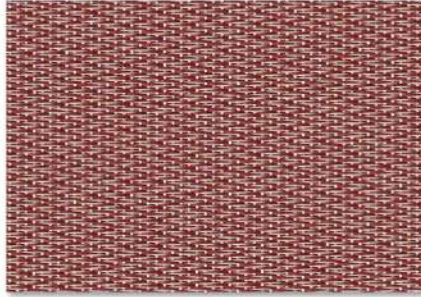
1011-0467



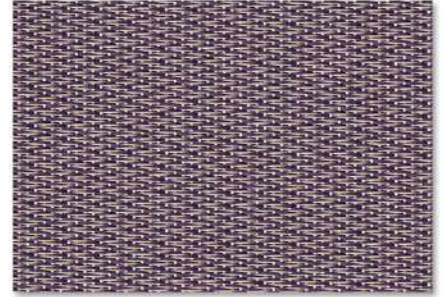
1011-0542



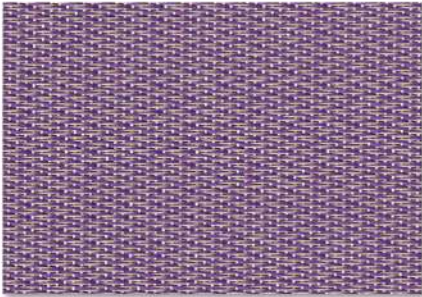
1011-0543



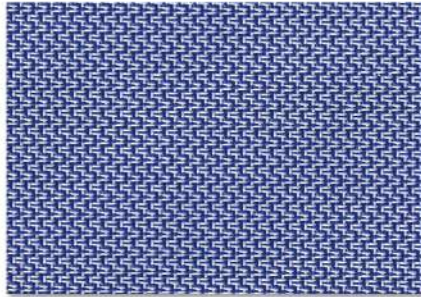
1011-0545



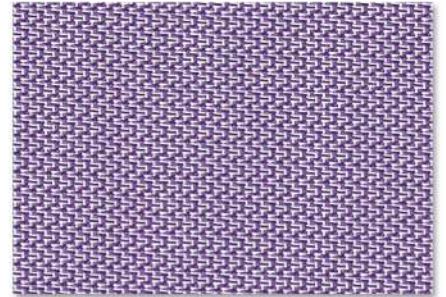
1011-0546



1011-0547



1111-0554



1111-0555



1111-0556

Leisure

1011

1111

■ Technical properties

Standards

Weight	312g±5%	275g±5%	ISO 2286-2
Width	250-300 cm		

■ Physical properties

Tensile strength (warp/weft)	Warp: ≥ 530 N/5cm Weft : ≥ 2500 N/5cm	Warp: ≥ 1000 N/5cm Weft : ≥ 1800 N/5cm	ISO13934-1
Tear strength (warp/weft)	Warp: ≥ 90 N Weft : ≥ 200 N	Warp: ≥ 120 N Weft : ≥ 150 N	ISO 4674
Resistance to abrasion	> 120 000cycles		ENISO12947-2 Martindale
Weather resistance	GS = 4.5 at 500h		AATCC TM 16.3
Bacterial & Fungal Resistance	Reduce more than 99.9% of bacteria 0 Grade		ASTM E2180-07 ASTM G21-09
Extreme working temperatures	- 30°C/ + 70°C - 22°F / + 158°F		

■ Flame retardancy

Rating-Clasificacion			
		pass	NFPA701
		B2	GB 17591
		pass	BS5867 Part 2 TypeB

■ Management systems

quality	ISO 9001
environment	ISO 14001
occupational health and safety	ISO 45001

■ Certifications, labels, garanties



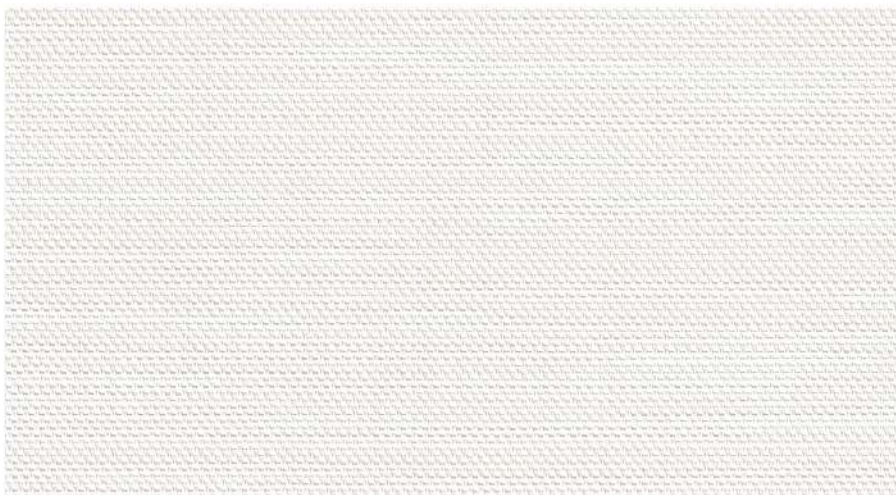
5 years
Garantee

■ Tools and services

- Making-up guide & cleaning instructions available on demand
- Possibility to visualize & play with customized colours and weavings on our Penelope Software.

Quoted technical characteristics are average values with a +/-5% tolerance. Our products are subject to improvements resulting from technical developments and we reserve the right to modify their characteristics at any time. The purchaser of our products is responsible for checking the above data.

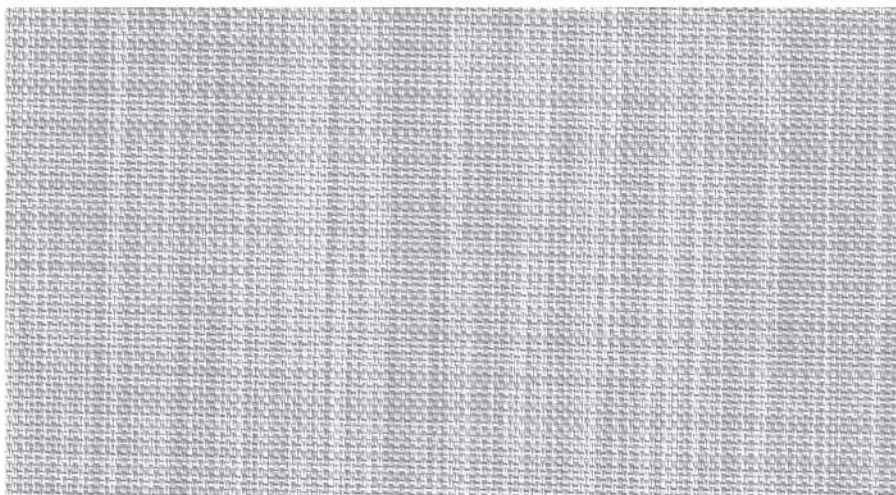
Mario 0 Private Nature



551



552



553

Mario 0 Private Nature

Reference	Privacy Natural	
Characteristic	Tightly Basket weave decorative design that combines natural style with optimum privacy	
Application	Internal roller blind, vertical blind, velum, roman shades, decorative panels, Printing, Space fitting	
Composition	22% Polyester -78% PVC	
Weave	Basket Weave 2 x1	
Density/inch	ASTM D3775-07	Warp: 28.0 ± 5% Weft : 11.0 ± 5%
Weight/m ²	ISO 2286 - 2	520g ± 5%
Thickness	ISO 2286 - 3	0.64 mm ± 5%
Openess factor	≈0%	
UV Screen	Up to 100%	
Fire,Smoke Classification	B2(CN) - GB17591	FR(US) - NFPA701 TM#1
Health/Safety	No chemicals harmful to health and safety of users - Oeko-tex Standard 100 class IV Guarantee of indoor air quality(VOC) - Greenguard® Gold EN71 Part 3:1994 RoHS - Lead Free GB18586 - 2001	
Width	250 - 300 cm	
Mechanical Resistance		
Breaking	ISO 13934-1	Warp: ≥ 2590 N/5cm Weft : ≥ 1130 N/5cm
Tear	ISO 4674	Warp: ≥ 135 N Weft : ≥ 60 N
Elongation to break point	ISO 13934-1	Warp: < 24.5% Weft : < 20.5%
Colour fastness to light (Scale of 8)	ISO 105 B02	Grade 8
Packing	Rolls of 30lm	
Warranty	5 years	



About HanDe

HanDe Group is a subsidiary of Sununion Group, who is mainly engaged in window covering business, HanDe was acquired from Hunter Douglas Group in 2015 and owns the Brand of "Sunesse" and "Rollergy", for his sun shading material and finished blind brand perceptively. As a professional integrator focusing on building shading and energy saving system, as well as an innovative technology enterprise using technology and designing to provide customized window covering products, HanDe is committed to improving people's living and working environment through sun shading, and inadvertently achieving balance between light and dark, cold and hot, space and space and the balance between city and nature.

"Play light and temperature, for green life" is the vision of HanDers. The footsteps of handers originated from the world-famous window covering enterprises, and the mission of the company is to create a comparable Chinese enterprise in the world in window covering industry.

